

# 客户图

## NOTES:

### 1.Material and Plating:

Housing:LCP,UL94V-0,Black

Signal Contacts :Phosphor Bronze.Gold Plated on Contact Area and 80u" Min Tin Plated onSolder Tail over nickel 50u" Min .

Ground Contacts : Brass.Gold Plated on Contact Area and 80u" Min Tin Plated onSolder Tail over nickel 50u" Min .

### Electrical Characteristics:

Current Rating: Signal: 3A Per Contact With 3 Adjacent Contacts (UL).Ground: 25A Per Contact With 1 Contact.Voltage Rating: 125V AC

Dielectric Withstanding Voltage: 525V AC For 1 minute.

Insulator Resistance: 5000MS min at DC 500.

Contact Resistance: Signal: 45m2 max .

Ground: 15m max

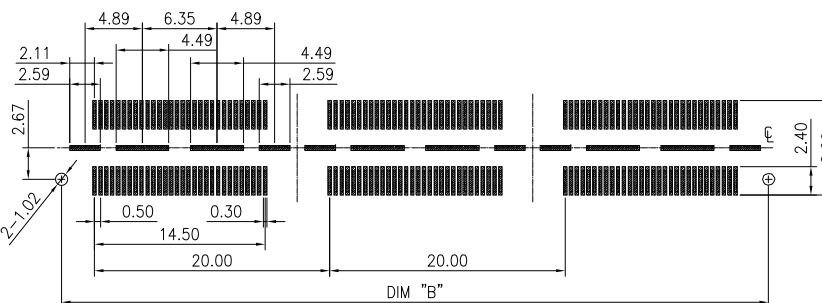
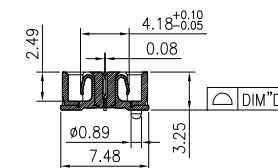
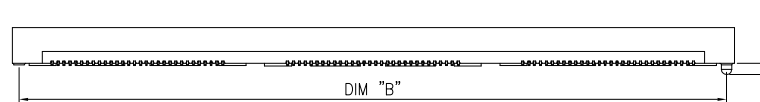
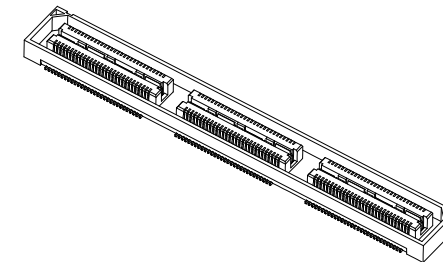
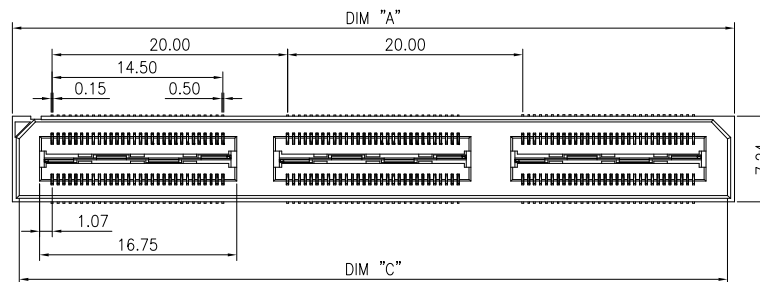
Operating Temperature:-55C ~+125°C

Durability: 250 Cycle

### 2.PART NO:

66A4-F XXX S2 032 R 01

Pin数码	端子电镀:	塑胶高度:	包装方式:
060=2*30PIN	S1=1u" Gold/Tin	032=3.25mm	R=TAPE REEL
.....	S2=3u" Gold/Tin		
	S3=5u" Gold/Tin		
	S4=10u" Gold/Tin		
	S5=15u" Gold/Tin		
	S6=30u" Gold/Tin		



RECOMMENDED PCB LAYOUT  
TOLERANCE±0.05

TABLE 1:

No. OF PIN	A	B	C	D
060=2*30PIN	21.38	20.13	20.18	0.10
120=2*60PIN	41.38	40.13	40.18	0.10
180=2*90PIN	61.38	60.13	60.18	0.15
240=2*120PIN	81.38	80.13	80.18	0.15
300=2*150PIN	101.38	100.15	100.18	0.15

				OPERATION		DRAW		WLY		2019.08.24		<b>SOLEPIN 东莞市硕品电子有限公司</b>			
				X.X ±0.30		DESIGN		Jensen		2019.08.24		Professional connector manufacturer DONGGUAN SOLEPIN ELECTRONICS CO., LTD.			
				X.XX ±0.20		CHECK		Jack		2019.08.24		SIZE	A4	PART NO.	66A4-FXXXS2032R01
				X.XXX ±0.10		APPROVE		Andy		2019.08.22		SHEET	1/1	TITLE:	0.50mm DOUBLE ROW BTB SOCKET H3.25
AO	DATE	NEW		CHANGE	APPROVE	DIM.	TOL	UNIT	mm	SCALE	1:1	PROJ.	⌀	DRAW NO.	SP-539

# 客户图

## NOTES:

### 1.Material and Plating:

Housing:LCP,UL94V-0,Black

Signal Contacts :Phosphor Bronze.Gold Plated on Contact Area and 80u" Min Tin Plated onSolder Tail over nickel 50u" Min .

Ground Contacts : Brass.Gold Plated on Contact Area and 80u" Min Tin Plated onSolder Tail over nickel 50u" Min .

### Electrical Characteristics:

Current Rating: Signal: 3A Per Contact With 3 Adjacent Contacts (UL).Ground: 25A Per Contact With 1 Contact.Voltage Rating: 125V AC

Dielectric Withstanding Voltage: 525V AC For 1 minute.

Insulator Resistance: 5000MS min at DC 500.

Contact Resistance: Signal: 45m $\Omega$  max .

Ground: 15m max

Operating Temperature:-55C ~+125°C

Durability: 250 Cycle

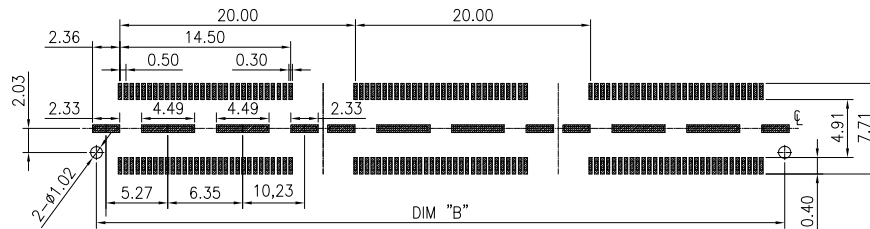
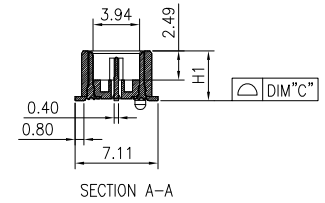
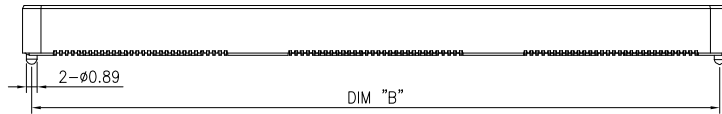
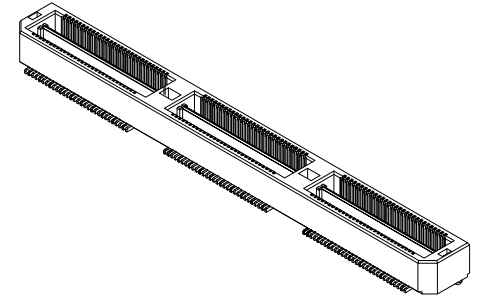
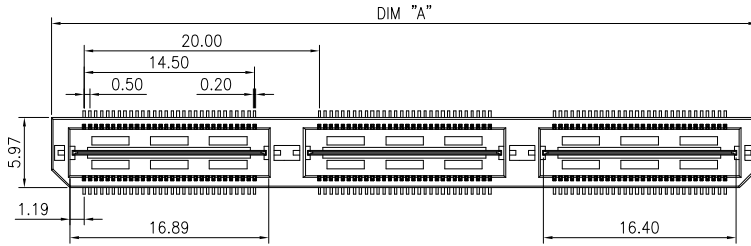
## 2.PART NO:

66A4-M XXX S2 XXX R 01

Pin数码	端子电镀:	塑胶高度:	包装方式:
060=2*30PIN	S1=1u" Gold/Tin	042=4.26mm (" H1 ")	R=TAPE REEL
.....	S2=3u" Gold/Tin	072=7.26mm (" H1 ")	
	S3=5u" Gold/Tin	102=10.26mm (" H1 ")	
	S4=10u" Gold/Tin	132=13.26mm (" H1 ")	
	S5=15u" Gold/Tin	142=14.26mm (" H1 ")	
	S6=30u" Gold/Tin	152=15.26mm (" H1 ")	
		182=18.26mm (" H1 ")	
		242=24.24mm (" H1 ")	

TABLE1:

No. OF PIN	A	B	C
060=2*30PIN	20.00	18.48	0.10
120=2*60PIN	40.00	38.48	0.10
180=2*90PIN	60.00	58.48	0.15
240=2*120PIN	80.00	78.48	0.15
300=2*150PIN	100.00	98.48	0.15



RECOMMENDED PCB LAYOUT  
TOLERANCE±0.05

HEIGHT WITH "66A4-F"	H1
5.00	4.26
8.00	7.26
11.00	10.26
14.00	13.26
15.00	14.26
16.00	15.26
19.00	18.26
25.00	24.24

				OPERATION		DRAW		WLY		2019.08.24		<b>SOLEPIN 东莞市硕品电子有限公司</b>	
				X.X	±0.30	DESIGN		Jensen		2019.08.24		Professional connector manufacturer DONGGUAN SOLEPIN ELECTRONICS CO., LTD.	
				X.XX	±0.20	CHECK		Jack		2019.08.24		SIZE	A4
				X.XXX	±0.10	APPROVE		Andy		2019.08.22		PART NO.	66A4-MXXXS2XXR01
AO		NEW		Angle		±3°						SHEET	1/1
REV	DATE	MODIFICATION DESCRIPTION		CHANGE	APPROVE	DIM. TOL		UNIT	mm	SCALE	1:1	TITLE:	0.50mm DOUBLE ROW BTB PLUG
						DIM. TOL						PROJ.	SP-540