

客户图

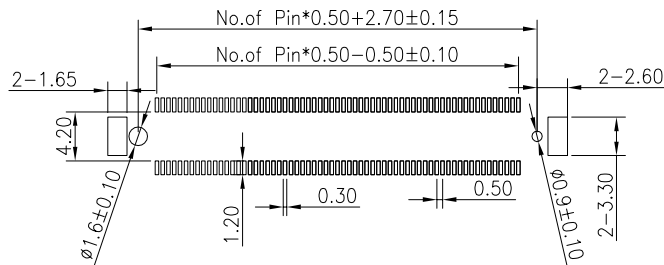
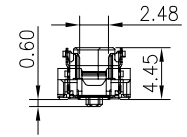
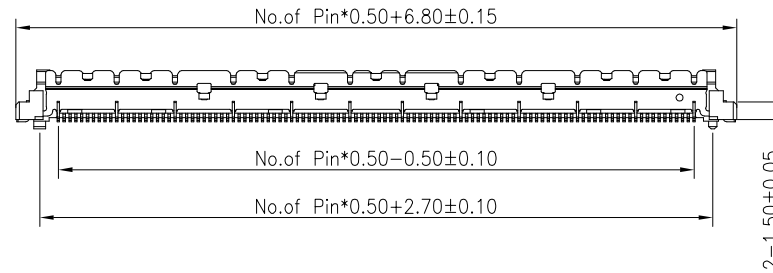
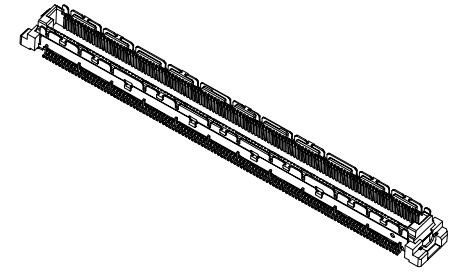
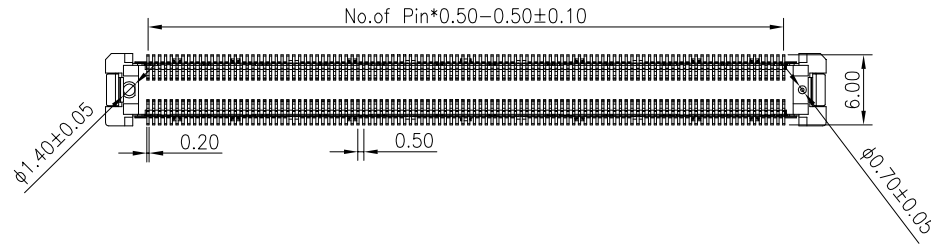
NOTES:

1. FINISH:
 - 1.1 HOUSING: LCP BLACK,UL94V-0.
 - 1.2 CONTACT: PHOSPHOR COPPER.
GOLD (SEE P/N) PLATED,
50u" MIN. NICKEL UNDERPLATED OVER ALL.
2. ELECTRICAL:
 - 2.1 CURRENT RATING: 0.5 A.
 - 2.2 VOLTAGE RATING: 50 V AC.
 - 2.3 CONTACT RESISTANCE: 80mΩ MAX.
 - 2.4 INSULATION RESISTANCE: 100MΩ MIN.
 - 2.5 WITHSTANDING VOLTAGE: 200V AC/1MINUTE.
 - 2.6 OPERATION TEMPERATURE:-45°C TO +125°C.
 - 2.7 Data Transfer Rate 16 Gbit/s

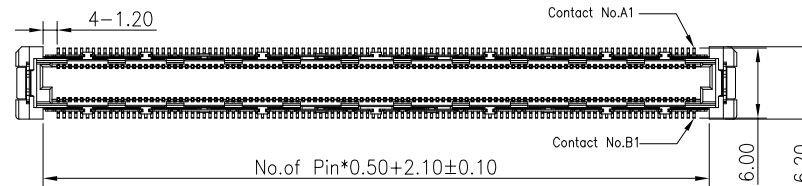
3.ORDER INFORMATION:

66A5-F XXX XX 045 R 01

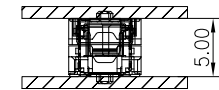
Pin 数目	端子电镀:	塑胶高度:	包装方式:
040=2*20PIN	G3=5u" Gold	045=4.45mm	R=REEL
080=2*40PIN	G4=10u" GoId		
120=2*60PIN	G5=15u" GoId		
160=2*80PIN	G6=30u" GoId		
220=2*110PIN			



RECOMMENDED PCB LAYOUT(TOP SIDE)
PCB BOARD TOLFRANCF±0.05



66A5-M-XXX-XX-032-R-01



66A5-F-XXX-XX-045-R-01

OPERATION		DRAW	WLY	2021.11.18
X.X	±0.40	DESIGN	Jensen	2021.11.18
X.XX	±0.25	CHECK	Jack	2021.11.18
X.XXX	±0.15	APPROVE	Andy	2021.11.18
Angle	±3°	UNIT	mm	SCALE
DIM.	TOL	UNIT	mm	SCALE
				1:1

SOLEPIN 东莞市硕品电子有限公司
Professional connector manufacturer DONGGUAN SOLEPIN ELECTRONICS CO., LTD.

AO	NEW					SIZE	A4	PART NO.	66A5-F-XXX-XX-045-R-01
REV	DATE	MODIFICATION DESCRIPTION	CHANGE	APPROVE		SHEET	1/1	TITLE:	0.50mm 高速板对板 母头 H=4.45
						PROJ.	☞	DRAW NO.	SP-1000

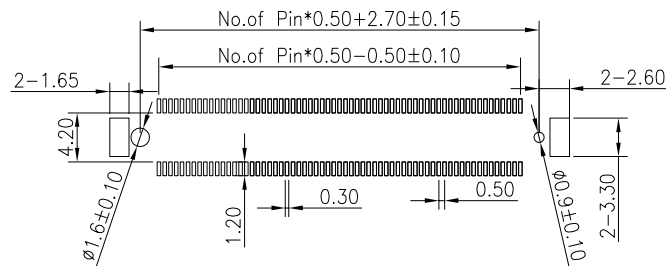
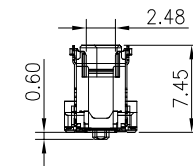
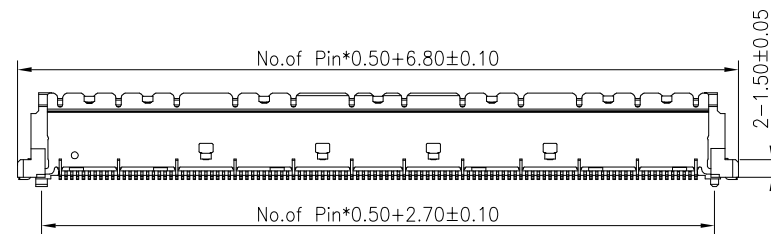
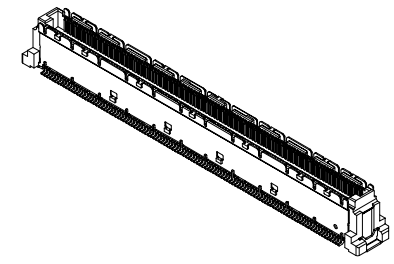
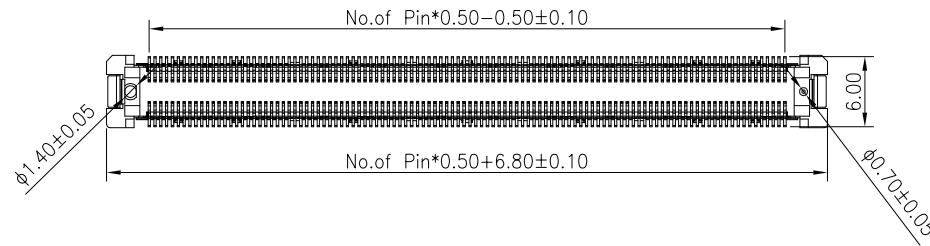
客户图

NOTES:

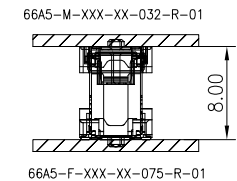
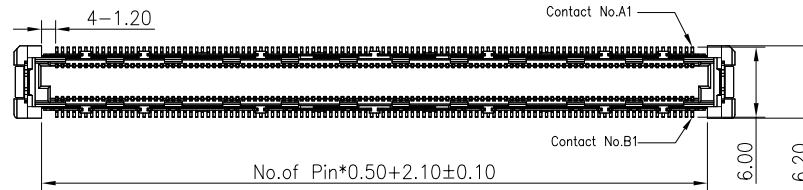
1. FINISH:
 - 1.1 HOUSING: LCP BLACK,UL94V-0.
 - 1.2 CONTACT: PHOSPHOR COPPER.
GOLD (SEE P/N) PLATED,
50u" MIN. NICKEL UNDERPLATED OVER ALL.
2. ELECTRICAL:
 - 2.1 CURRENT RATING: 0.5 A.
 - 2.2 VOLTAGE RATING: 50 V AC.
 - 2.3 CONTACT RESISTANCE: 80mΩ MAX.
 - 2.4 INSULATION RESISTANCE: 100MΩ MIN.
 - 2.5 WITHSTANDING VOLTAGE: 200V AC/1MINUTE.
 - 2.6 OPERATION TEMPERATURE:-45°C TO +125°C.
 - 2.7 Data Transfer Rate 16 Gbit/s
3. ORDER INFORMATION:

66A5-F XXX XX 075 R 01

Pin 数目	端子电镀:	塑胶高度:	包装方式:
040=2*20PIN	G3=5u" Gold	075=7.45mm	R=REEL
080=2*40PIN	G4=10u" GoId		
120=2*60PIN	G5=15u" GoId		
160=2*80PIN	G6=30u" GoId		
220=2*110PIN			



RECOMMENDED PCB LAYOUT(TOP SIDE)
PCB BOARD TOLFRANCF±0.05



						OPERATION	DRAW	WLY	2021.11.18	SOLEPIN 东莞市硕品电子有限公司			
						X.X ±0.40	DESIGN	Jensen	2021.11.18	Professional connector manufacturer DONGGUAN SOLEPIN ELECTRONICS CO., LTD.			
						X.XX ±0.25	CHECK	Jack	2021.11.18	SIZE	A4	PART NO.	66A5-F-XXX-XX-045-R-01
AO		NEW				X.XXX ±0.15	APPROVE	Andy	2021.11.18	SHEET	1/1	TITLE:	0.50mm 高速板对板 母头 H=7.45
REV	DATE	MODIFICATION DESCRIPTION	CHANGE	APPROVE		Angle ±3°	UNIT	mm	SCALE	1:1	PROJ.	DRAW NO.	SP-1001
						DIM. TOL							

客户图

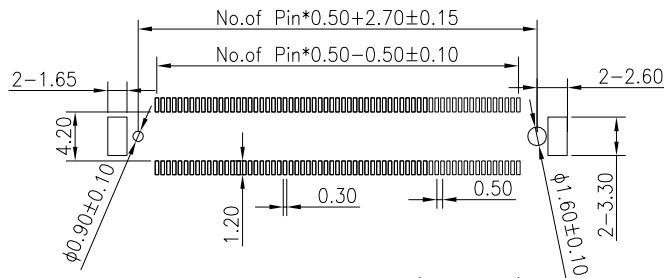
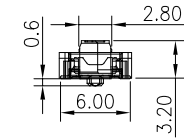
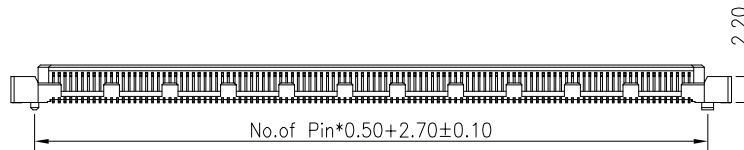
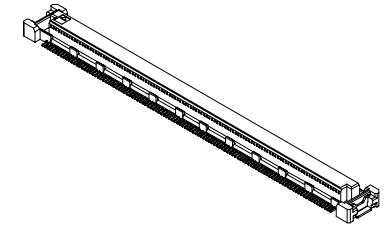
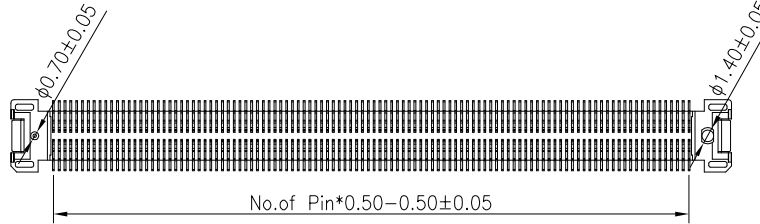
NOTES:

1. FINISH:
 - 1.1 HOUSING: LCP BLACK,UL94V-0.
 - 1.2 CONTACT: PHOSPHOR COPPER.
GOLD (SEE P/N) PLATED,
50u" MIN. NICKEL UNDERPLATED OVER ALL.
2. ELECTRICAL:
 - 2.1 CURRENT RATING: 0.5 A.
 - 2.2 VOLTAGE RATING: 50 V AC.
 - 2.3 CONTACT RESISTANCE: 80mΩ MAX.
 - 2.4 INSULATION RESISTANCE: 100MΩ MIN.
 - 2.5 WITHSTANDING VOLTAGE: 200V AC/1MINUTE.
 - 2.6 OPERATION TEMPERATURE:-45°C TO +125°C.
 - 2.7 Data Transfer Rate 16 Gbit/s

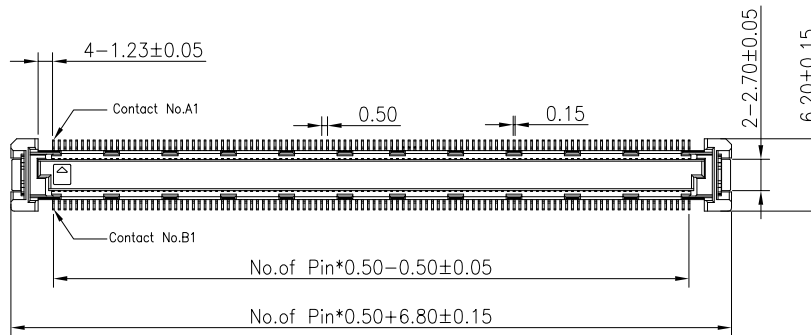
3.ORDER INFORMATION:

66A5-M XXX XX 032 R 01

Pin 数目	端子电镀:	塑胶高度:	包装方式:
040=2*20PIN	G3=5u" Gold	032=3.20mm	R=REEL
080=2*40PIN	G4=10u" GoId		
120=2*60PIN	G5=15u" GoId		
160=2*80PIN	G6=30u" GoId		
220=2*110PIN			



RECOMMENDED PCB LAYOUT(TOP SIDE)
PCB BOARD TOLFRANCF±0.05



OPERATION		DRAW	WLY	2021.11.18
X.X	±0.40	DESIGN	Jensen	2021.11.18
X.XX	±0.25	CHECK	Jack	2021.11.18
X.XXX	±0.15	APPROVE	Andy	2021.11.18
Angle	±3°	UNIT	mm	SCALE 1:1
DIM.	TOL			

SOLEPIN 东莞市硕品电子有限公司
Professional connector manufacturer DONGGUAN SOLEPIN ELECTRONICS CO., LTD.

AO	NEW					SIZE	A4	PART NO.	66A5-M-XXX-XX-075-R-01
REV	DATE	MODIFICATION DESCRIPTION	CHANGE	APPROVE		SHEET	1/1	TITLE:	0.50mm 高速板对板 公头 H=3.20
						PROJ.	☞	DRAW NO.	SP-1002