

客户图

NOTES:

1. FINISH:

- 1.1 HOUSING: POLYAMIDE BLACK,UL94V-0.
- 1.2 CONTACT: PHOSPHOR BRONZE. GOLD (SEE P/N) PLATED IN CONTACT AREA, GOLD FLASH PLATED IN SOLDER AREA, 50u" MIN. NICKEL UNDERPLATED OVER ALL.
- 1.3 GROUND: BRASS,80u" MIN MATTE TIN PLATED OVER 50u" MIN NICKEL UNDERPLATED OVERALL.

2. ELECTRICAL:

- 2.1 CURRENT RATING: 0.5A/PIN
- 2.2 VOLTAGE RATING: 125V AC/DC.
- 2.3 CONTACT RESISTANCE: 65mΩ MAX.
- 2.4 INSULATION RESISTANCE: 250V DC/0.1S/1000MΩ

3. Max Processing Temp: 265°C Seconds 40S

4. FLOATING RANGE OF THIS CONNECTOR IS 0.7MM MAX.

THE MAXIMUM CYCLE TIME OF THE FLOATING OPERATION IS IN ACCORDANCE WITH THE MATING CYCLE OF THE CONNECTOR

5. PLEASE USE THE CONNECTORS WITHIN THE SPECIFIED PCB DISTANCE.

PLEASE REFER TO THE DRAWINGS OF MATING CONNECTOR

6. BLEMISH AND HIT MARK CAN BE OCCURED THROUGH OUT THE MANUFACTURING PROCESS

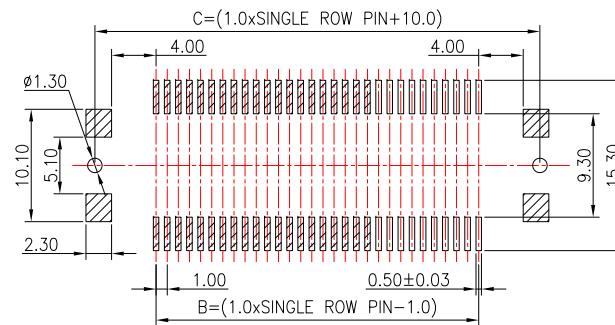
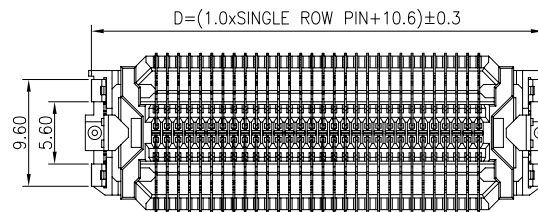
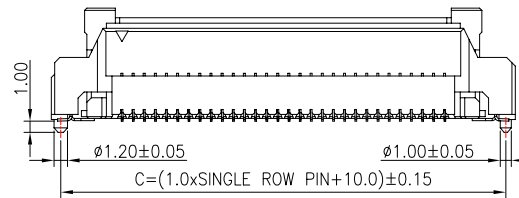
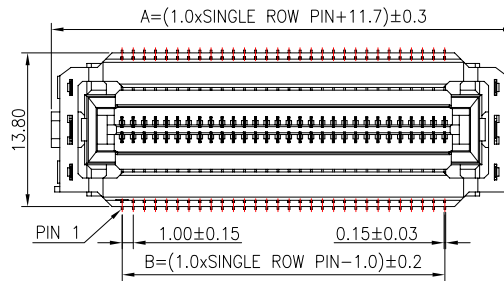
7. ORDER INFORMATION:

66D6-F XXX XX XXX R 01

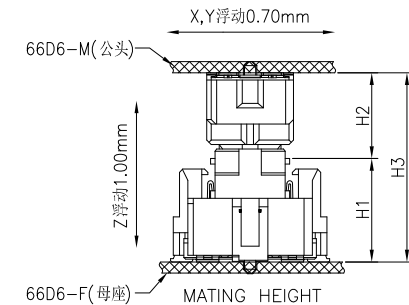
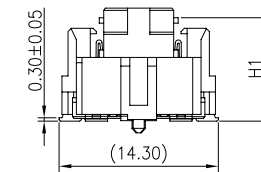
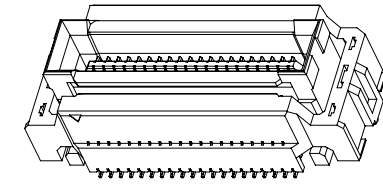
Pin 数码	端子电镀:	塑胶高度:	包装方式:
020=2*10PIN	N0=Gold Flash/Ni ~ (半金镍)	093=9.30mm("H1") 143=14.30mm("H1")	R=载带包装
060=2*30PIN	N1=1u" Gold/Ni N2=3u" Gold/Ni N3=5u" Gold/Ni N4=10u" Gold/Ni N5=15u" Gold/Ni N6=30u" Gold/Ni		

TABLE:

No. OF PIN	A	B	C	D
020=2x10PIN	21.70	9.00	20.00	20.60
030=2x15PIN	26.70	14.00	25.00	25.60
040=2x20PIN	31.70	19.00	30.00	30.60
050=2x25PIN	36.70	24.00	35.00	35.60
060=2x30PIN	41.70	29.00	40.00	40.60



RECOMMENDED PCB LAYOUT
PCB BOARD TOLFRANCF±0.05



H1	H2	"H3" MATING HEIGHT
9.30	4.70	15.00
	7.70	18.00
14.30	9.70	20.00
	4.70	20.00
	7.70	23.00
	9.70	25.00

OPERATION	DRAW	WLY	2020.11.18
X.X ±0.30	DESIGN	Jensen	2020.11.18
X.XX ±0.20	CHECK	Jack	2020.11.18
X.XXX ±0.10	APPROVE	Andy	2020.11.18
Angle ±3°			
DIM. TOL	UNIT	mm	SCALE 1:1

SOLEPIN 东莞市硕品电子有限公司
Professional connector manufacturer DONGGUAN SOLEPIN ELECTRONICS CO., LTD.

REV	DATE	MODIFICATION DESCRIPTION	CHANGE	APPROVE
AO		NEW		

SIZE	A4	PART NO.	66D6-FXXXXXXXR01
SHEET	1/1	TITLE:	1.00mm 浮动BTB 母座直立式SMT TYPE
PROJ.	PROJ.	DRAW NO.	SP-410

客户图

NOTES:

1. FINISH:

- 1.1 HOUSING: POLYAMIDE BLACK,UL94V-0.
- 1.2 CONTACT: PHOSPHOR BRONZE,GOLD (SEE P/N) PLATED IN CONTACT AREA, GOLD FLASH PLATED IN SOLDER AREA, 50u" MIN. NICKEL UNDERPLATED OVERALL.
- 1.3 GROUND: BRASS,80u" MIN MATTE TIN PLATED OVER 50u" MIN NICKEL UNDERPLATED OVERALL.

2. ELECTRICAL:

- 2.1 CURRENT RATING: 0.5A/PIN
- 2.2 VOLTAGE RATING: 125V AC/DC.
- 2.3 CONTACT RESISTANCE: 65mΩ MAX.
- 2.4 INSULATION RESISTANCE: 250V DC/0.1S/1000MΩ

3. Max Processing Temp: 265°C Seconds 40S

4. FLOATING RANGE OF THIS CONNECTOR IS 0.7MM MAX.

THE MAXIMUM CYCLE TIME OF THE FLOATING OPERATION IS IN ACCORDANCE WITH THE MATING CYCLE OF THE CONNECTOR

5. PLEASE USE THE CONNECTORS WITHIN THE SPECIFIED PCB DISTANCE.

PLEASE REFER TO THE DRAWINGS OF MATING CONNECTOR

6. BLEMISH AND HIT MARK CAN BE OCCURED THROUGH OUT THE MANUFACTURING PROCESS

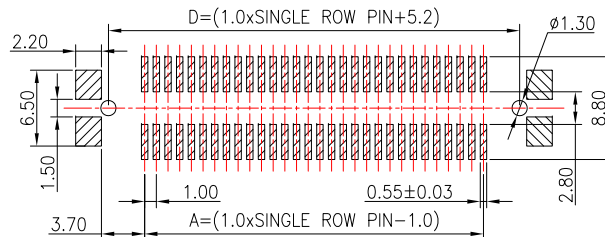
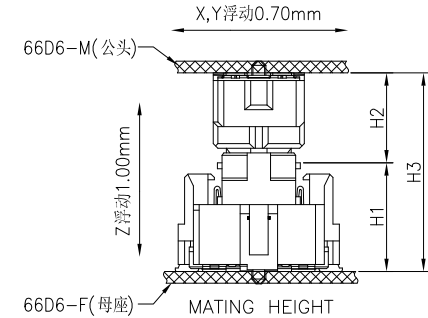
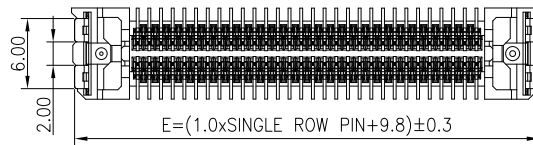
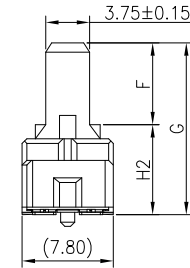
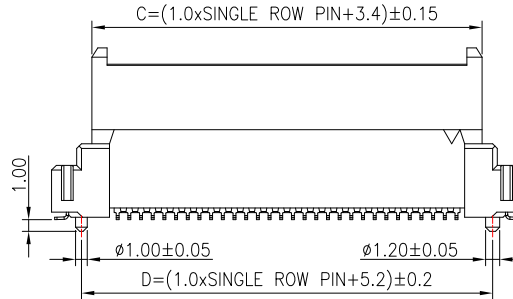
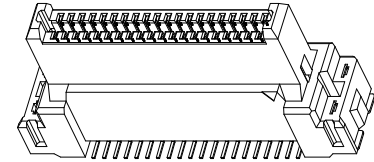
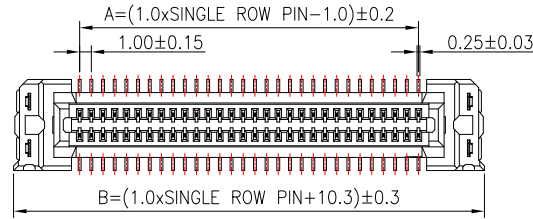
7. ORDER INFORMATION:

66D6-M XXX XX XXX R 01

Pin 数码	端子电镀:	塑胶高度:	包装方式:
060=2*30PIN	N0=Gold Flash/Ni (半金镍)	117=11.70mm ("G")	R=载带包装
.....	N1=1u" Gold/Ni	147=14.70mm ("G")	
	N2=3u" Gold/Ni	167=16.70mm ("G")	
	N3=5u" Gold/Ni		
	N4=10u" Gold/Ni		
	N5=15u" Gold/Ni		
	N6=30u" Gold/Ni		

TABLE:

No. OF PIN	A	B	C	D	E
020=2x10PIN	9.00	20.30	13.40	15.20	19.80
030=2x15PIN	14.00	25.30	18.40	20.20	24.80
040=2x20PIN	19.00	30.30	23.40	25.20	29.80
050=2x25PIN	24.00	35.30	28.40	30.20	34.80
060=2x30PIN	29.00	40.30	33.40	35.20	39.80



RECOMMENDED PCB LAYOUT
PCB BOARD TOLFRANCF ± 0.05

"G" STACK HEIGHT	H2	F
11.70mm	4.70	7.00
14.70mm	7.70	
16.70mm	9.70	

H1	H2	"H3" MATING HEIGHT
9.30	4.70	15.00
	7.70	18.00
14.30	9.70	20.00
	4.70	20.00
	7.70	23.00
	9.70	25.00

OPERATION	DRAW	WLY	2020.11.18
X.X ±0.30	DESIGN	Jensen	2020.11.18
X.XX ±0.20	CHECK	Jack	2020.11.18
X.XXX ±0.10	APPROVE	Andy	2020.11.18
Angle ±3°			
DIM. TOL	UNIT	mm	SCALE 1:1

SOLEPIN 东莞市硕品电子有限公司
Professional connector manufacturer DONGGUAN SOLEPIN ELECTRONICS CO., LTD.

REV	DATE	MODIFICATION DESCRIPTION	CHANGE	APPROVE
AO		NEW		

SIZE	A4	PART NO.	66D6-MXXXXXXXXR01
SHEET	1/1	TITLE:	1.00mm 浮动BTB 公头直立式SMT TYPE
PROJ.	PROJ.	DRAW NO.	SP-411