

客户图

SPECIFICATIONS

- HOUSING: LCP BLACK,UL94V-0.
- CURRENT RATING: 1.0A
- VOLTAGE RATING: 240V AC
- OPERATING TEMPERATURE RANGE:-55°C TO +125°C
- OPERATING HUMIDITY RANGE: 90% TO 95%
- WITHSTANDING VOLTAGE: 700V AC/MINUTE.

66F3-F XX XX XX XXX R 01

ROWS

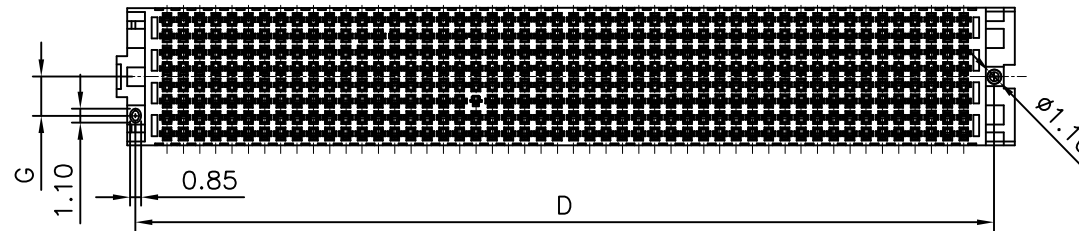
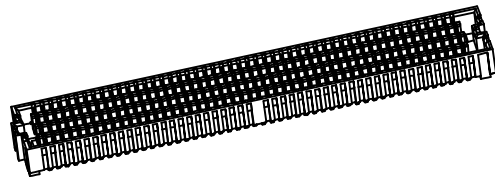
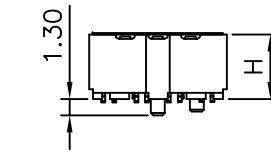
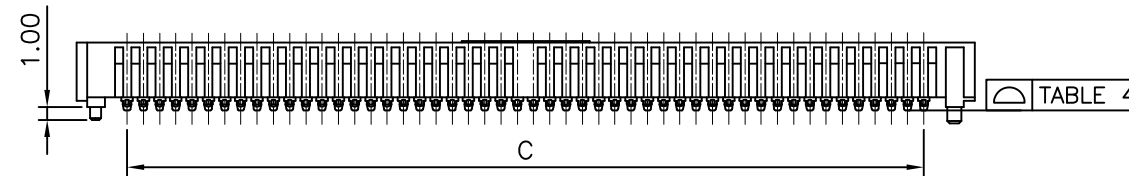
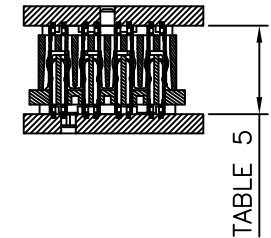
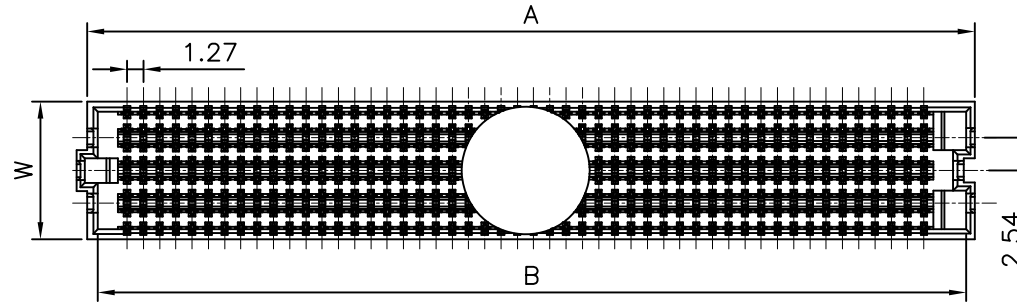
- 04=4 ROWS
- 05=5 ROWS
- 06=6 ROWS
- 08=4 ROWS
- 10=4 ROWS
- 12=4 ROWS

Pin No.
10=10PIN
~
50=50PIN

PLATING:
S0=Gold Flash/TIN
S4=10u" Gold
S6=30u" Gold

HEIGHT:
050=5.05mm ("H")
060=6.05mm ("H")
065=6.55mm ("H")
075=7.54mm ("H")

PACKING:
R=REEL



HEIGHT	H
1	5.05
2	6.05
3	6.55
4	7.54

ROWS	W	G
4	5.66	2.01
5 OR 6	8.20	3.05
8	10.74	3.05
10	13.28	3.05
12	15.82	3.05
14	18.36	3.05

NO OF ROWS	A	B	C	D
10	18.52	17.02	11.43	16.28
15	24.87	23.37	17.78	22.63
19	29.95	28.45	22.86	27.71
20	31.22	29.72	24.13	28.98
25	37.57	36.07	30.48	35.33
30	43.92	42.42	36.83	41.68
40	56.62	55.12	49.53	54.38
50	69.32	67.82	62.23	67.08

POSITION	COPLANARITY
10 PIN	0.15
20 PIN	0.20
30 PIN	0.25
40 PIN	0.23
50 PIN	0.23

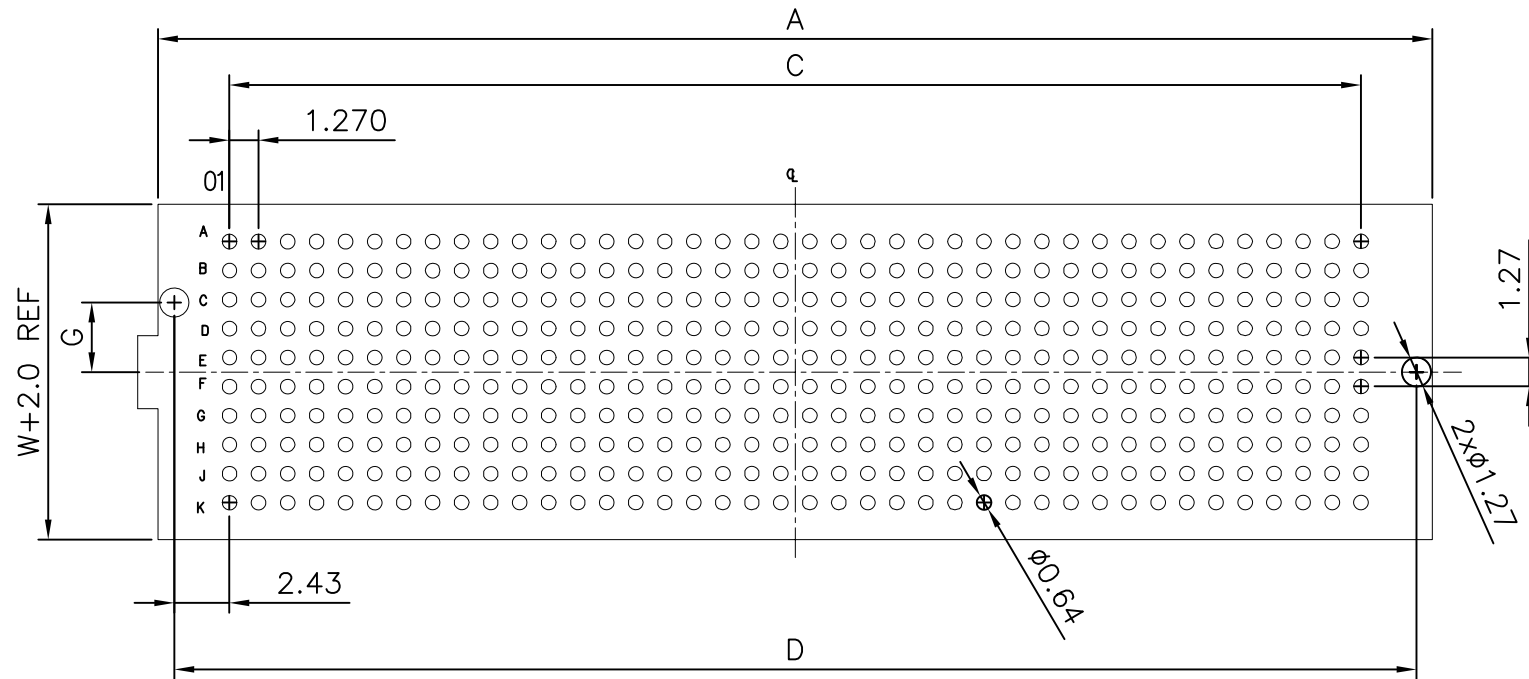
	5.05	6.05	6.55	7.54
4.72	7.00	8.00	8.50	9.50
5.72	8.00	9.00	9.50	10.50
6.22	8.50	9.50	10.00	11.00
8.23	NA	NA	12.00	NA
9.27	11.50	12.50	13.00	14.00
9.70	12.00	13.00	13.50	14.50
11.71	14.00	15.00	15.50	16.50
13.72	16.00	17.00	17.50	18.50

REV	DATE	MODIFICATION DESCRIPTION	CHANGE	APPROVE	OPERATION	DRAW	WLY	SCALE	UNIT	mm	SCALE	1:1	PROJ.	SIZE	A4	PART NO.	TITLE:	1.27 PITCH SOCKET
AO		NEW			X.X ±0.30	DESIGN	Jensen	2020.11.18								66F3-FXXXXXXXR01		
					X.XX ±0.20	CHECK	Jack	2020.11.18										
					X.XXX ±0.10	APPROVE	Andy	2020.11.18										
					Angle ±3°													
					DIM. TOL													

SOLEPIN 东莞市硕品电子有限公司
Professional connector manufacturer DONGGUAN SOLEPIN ELECTRONICS CO., LTD.

SIZE A4 PART NO. 66F3-FXXXXXXXR01
SHEET 1/2 TITLE: 1.27 PITCH SOCKET
PROJ. DRAW NO. SP-411

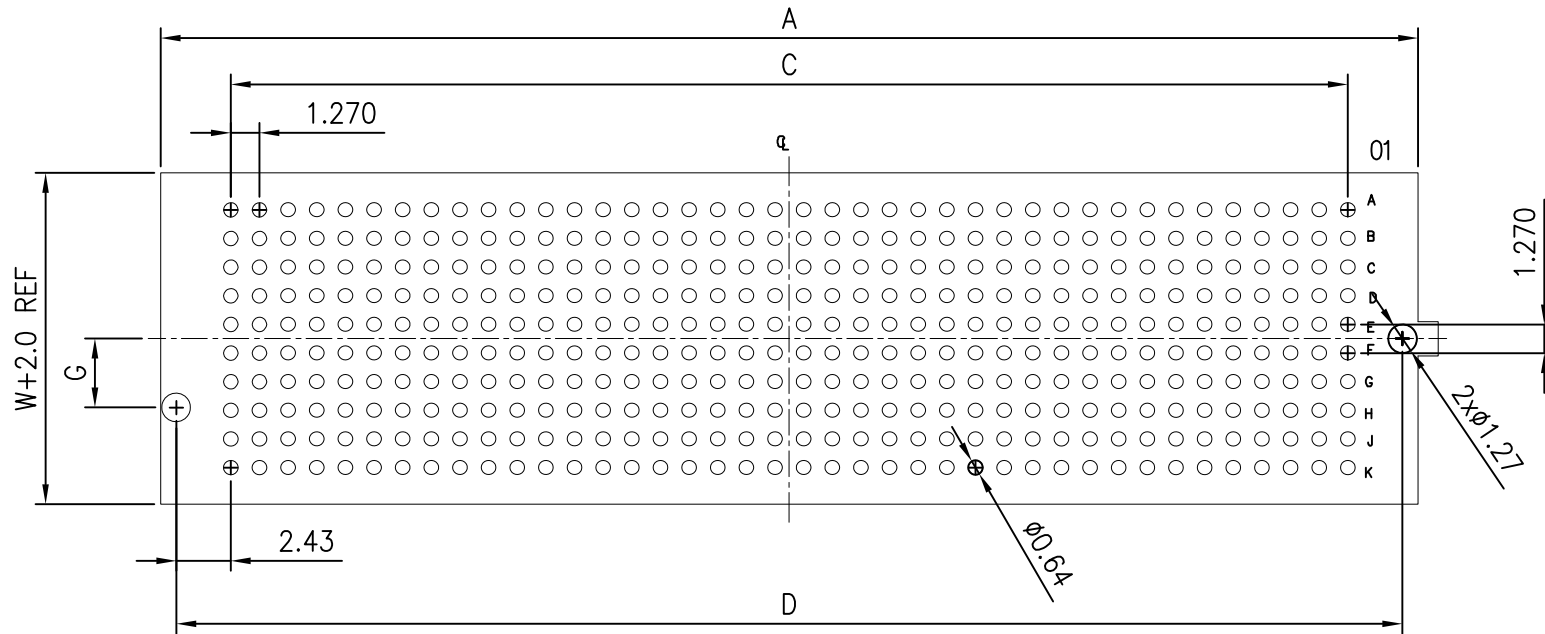
客户图



Recommended PC board pattern
(TOP VIEW)

						OPERATION	DRAW	WLY	2020.11.18	SOLEPIN 东莞市硕品电子有限公司			
						X.X ±0.30	DESIGN	Jensen	2020.11.18	Professional connector manufacturer DONGGUAN SOLEPIN ELECTRONICS CO., LTD.			
						X.XX ±0.20	CHECK	Jack	2020.11.18	SIZE	A4	PART NO.	66F3-FXXXXXXXR01
						X.XXX ±0.10	APPROVE	Andy	2020.11.18	SHEET	2/2	TITLE:	1.27 PITCH SOCKET
AO		NEW				Angle ±3°				PROJ.	↺	DRAW NO.	SP-411
REV	DATE	MODIFICATION DESCRIPTION	CHANGE	APPROVE		DIM. TOL	UNIT	mm	SCALE	1:1			

客户图



Recommended PC board pattern
(TOP VIEW)

						OPERATION	DRAW	WLY	2020.11.18	SOLEPIN 东莞市硕品电子有限公司			
						X.X ±0.30	DESIGN	Jensen	2020.11.18	Professional connector manufacturer DONGGUAN SOLEPIN ELECTRONICS CO., LTD.			
						X.XX ±0.20	CHECK	Jack	2020.11.18	SIZE	A4	PART NO.	66F3-MXXXXXXXXR01
						X.XXX ±0.10	APPROVE	Andy	2020.11.18	SHEET	2/2	TITLE:	1.27 PITCH PLUG
AO		NEW				Angle ±3°				PROJ.	↺	DRAW NO.	SP-412
REV	DATE	MODIFICATION DESCRIPTION	CHANGE	APPROVE		DIM. TOL	UNIT	mm	SCALE	1:1			