

客户图

NOTES:

1.FINISH:

- 1.1 HOUSING: LCP BLACK,UL94V-0.
- 1.2 CONTACT: PHOSPHOR BRONZE, INTEGRAL NICKEL BASE 50u"MIN, GOLD (SEE P/N) PLATED IN CONTACT AREA, 100u" MIN MATTE TIN PLATED IN SOLDER AREA,
- 1.3 LOCK: BRASS, 100u" MIN TIN PLATED OVER NICKEL 40u".

2. ELECTRICAL:

- 2.1 CURRENT RATING: 1.7AMP.
- 2.2 DIELECTRIC WITHSTANDING VOLTAGE: 500V AC
- 2.3 INSULATION RESISTANCE: 1000MΩ MIN.
- 2.4 CONTACT RESISTANCE: 25mΩ MAX.
3. OPERATION TEMPERATURE:-55°C TO +125°C.
4. RoHS COMPLIANT.

66F2-F XXX XX XXX R 01

Pin数码

端子电镀:

塑胶高度:

包装方式:

012=2*06PIN

S1=1u" Gold/Tin

062=6.25mm, DIM X=1.05

R=载带包装

~

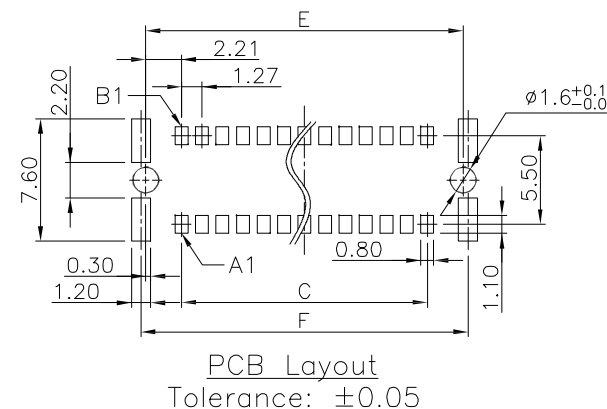
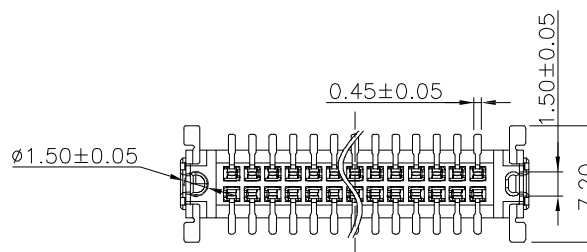
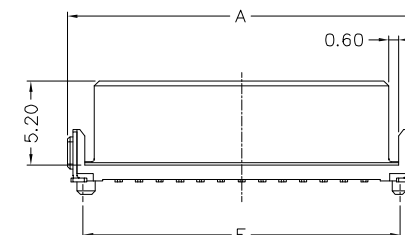
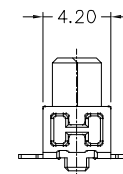
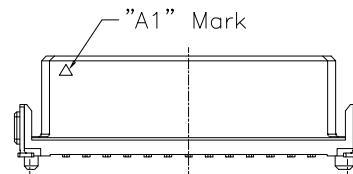
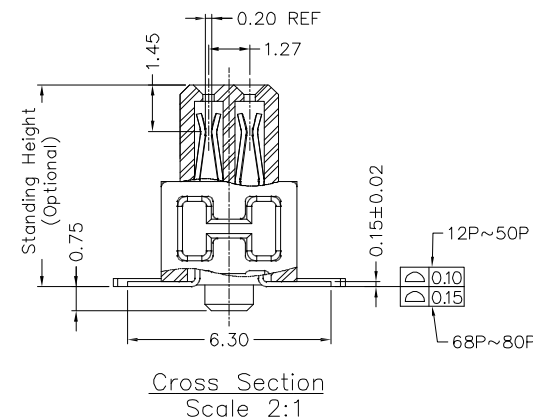
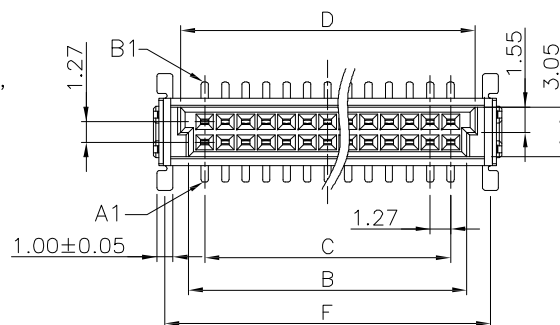
S3=5u" Gold/Tin

090=9.05mm, DIM X=3.85


080=2*40PIN

S5=15u" Gold/Tin

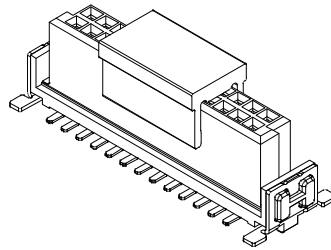
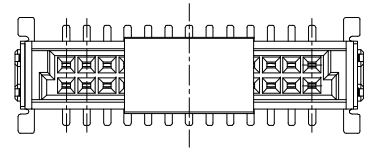
136=13.65mm, DIM X=8.45



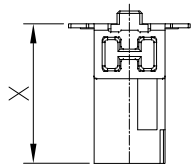
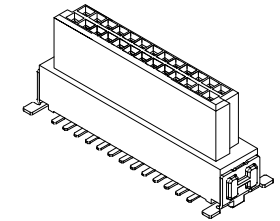
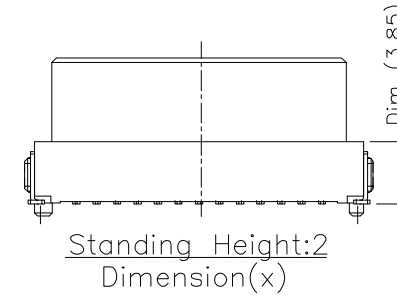
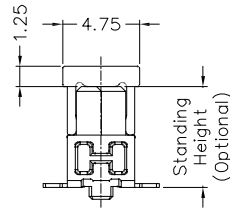
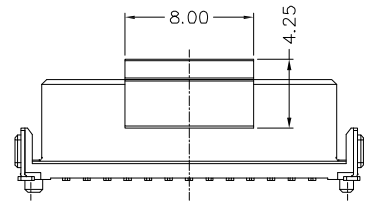
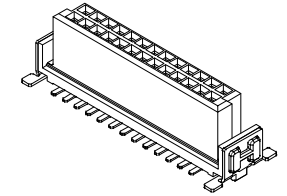
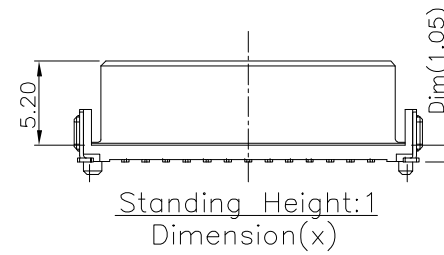
Positions	Dimension					
	A	B	C	D	E	F
10	11.43	7.10	5.08	8.10	9.50	10.07
12	12.70	8.37	6.35	9.37	10.77	11.34
16	15.24	10.91	8.89	11.91	13.31	13.88
20	17.78	13.45	11.43	14.45	15.85	16.42
24	20.32	15.99	13.97	16.99	18.39	18.96
26	21.59	17.26	15.24	18.26	19.66	20.23
30	24.13	19.80	17.78	20.80	22.20	22.77
32	25.40	21.07	19.05	22.07	23.47	24.04
40	30.48	26.15	24.13	27.15	28.55	29.12
50	36.83	32.50	30.48	33.50	34.90	35.47
68	48.26	43.93	41.91	44.93	46.33	46.90
80	55.88	51.55	49.53	52.55	53.95	54.52

						OPERATION		DRAW		WLY		2019.10.30		<div>SOLEPiN东莞市硕品电子有限公司</div> <div>Professional connector manufacturer DONGGUAN SOLEPIN ELECTRONICS CO., LTD.</div>			
						X.X	±0.40	DESIGN		Jensen		2019.10.30					
						X.XX	±0.25	CHECK		Jack		2019.10.30					
						X.XXX	±0.15	APPROVE		Andy		2019.10.30					
AO		NEW					Angle	±3°					2019.10.30	SHEET	1/2	TITLE:	PITCH 1.27 FEMALE BOARD TO BOARD CONNECTOR
REV	DATE	MODIFICATION DESCRIPTION			CHANGE	APPROVE	DIM.	TOL	UNIT		mm	SCALE	1:1	PROJ.		DRAW NO.	SP-071

客户图

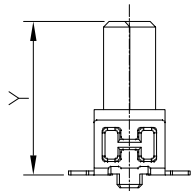


Standing Height:1
With Cap Type

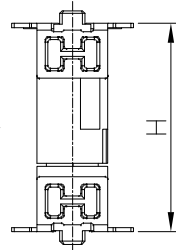


66F2-M

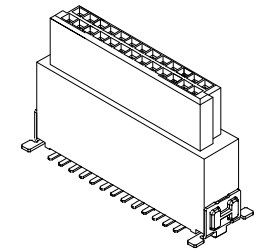
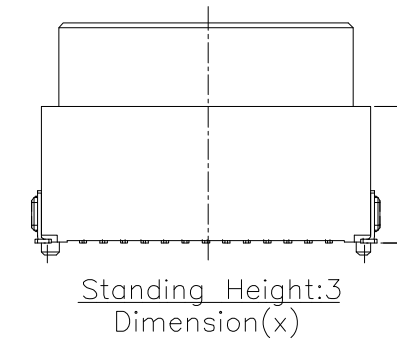
Mating →




66F2-F



Code	1			2			3		
X(66F2-M)	6.75			8.25			9.85		
Y(66F2-F)	6.25	9.05	13.65	6.25	9.05	13.65	6.25	9.05	13.65
H(Mating)	8.0	10.8	15.4	9.5	12.3	16.9	11.1	13.9	18.5



Standing Height:3
Dimension(x)

					OPERATION		DRAW		WLY		2019.10.30		<div>SOLEPIN 东莞市硕品电子有限公司</div> <div>Professional connector manufacturer DONGGUAN SOLEPIN ELECTRONICS CO., LTD.</div>				
					X.X	±0.40	DESIGN		Jensen		2019.10.30						
					X.XX	±0.25	CHECK		Jack		2019.10.30						
					X.XXX	±0.15	APPROVE		Andy		2019.10.30						
A0		NEW		——	——	Angle	±3°					SHEET	2/2	TITLE:		PITCH 1.27 FEMALE BOARD TO BOARD CONNECTOR	
REV	DATE	MODIFICATION DESCRIPTION		CHANGE	APPROVE	DIM.	TOL	UNIT		mm	SCALE	1:1	PROJ.		DRAW NO.		SP-071

客户图

NOTES:

1.FINISH:

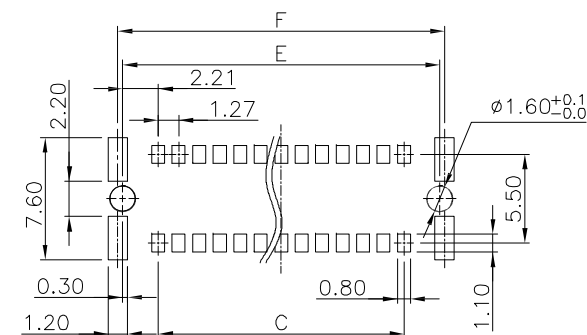
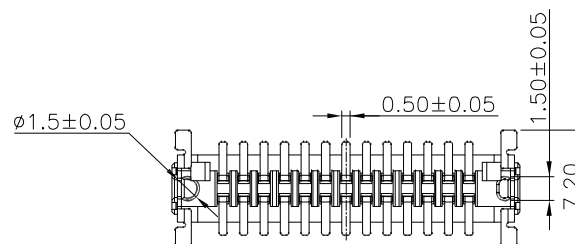
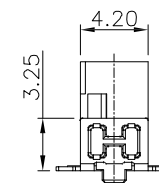
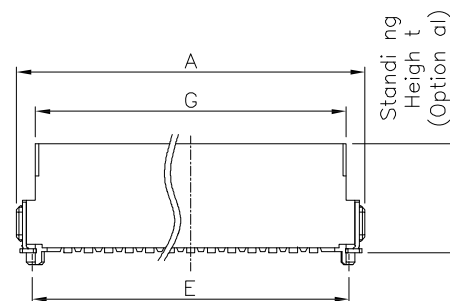
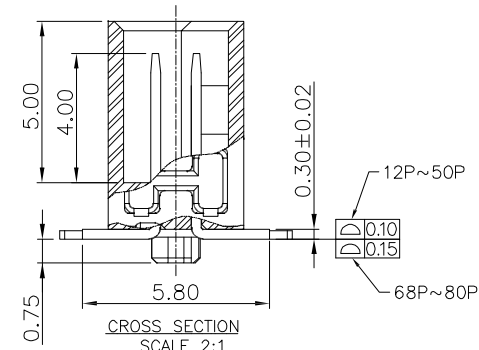
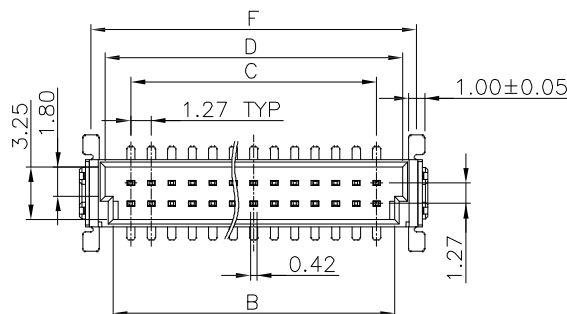
- 1.1 HOUSING: LCP BLACK,UL94V-0.
- 1.2 CONTACT: PHOSPHOR BRONZE, INTEGRAL NICKEL BASE 50u"MIN, GOLD (SEE P/N) PLATED IN CONTACT AREA, 100u" MIN MATTE TIN PLATED IN SOLDER AREA,
- 1.3 LOCK: BRASS, 100u" MIN TIN PLATED OVER NICKEL 40u".

2. ELECTRICAL:

- 2.1 CURRENT RATING: 1.7AMP.
- 2.2 DIELECTRIC WITHSTANDING VOLTAGE: 500V AC
- 2.3 INSULATION RESISTANCE: 1000MΩ MIN.
- 2.4 CONTACT RESISTANCE: 25mΩ MAX.
3. OPERATION TEMPERATURE:-55°C TO +125°C.
4. RoHS COMPLIANT.


66F2-M XXX XX XXX R 01

Pin数码 端子电镀: 塑胶高度: 包装方式:
 012=2*06PIN S1=1u" Gold/Tin 067=6.75mm R=载带包装
 ~ S3=5u" Gold/Tin 082=8.25mm
 080=2*40PIN S5=15u" Gold/Tin 098=9.85mm

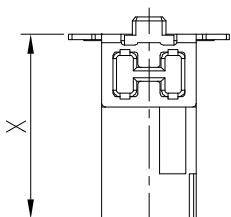
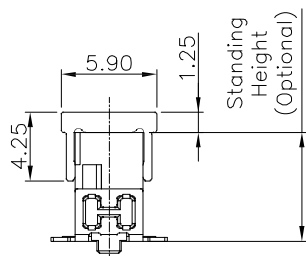
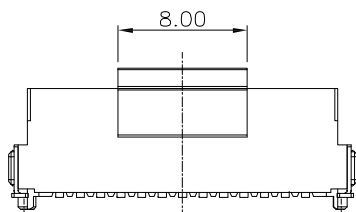
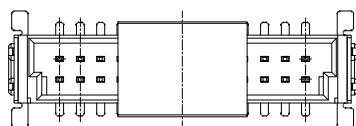


P.C.Board Layout

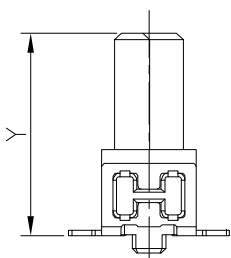
PIN NO.	A	B	C	D	E	F	G
12	12.70	8.57	6.35	9.57	10.77	11.34	10.37
16	15.24	11.11	8.89	12.11	13.31	13.88	12.91
20	17.78	13.65	11.43	14.65	15.85	16.42	15.45
24	20.32	16.19	13.97	17.19	18.39	18.96	17.99
26	21.59	17.46	15.24	18.46	19.66	20.23	19.26
30	24.13	20.00	17.78	21.00	22.20	22.77	21.80
32	25.40	21.27	19.05	22.27	23.47	24.04	23.07
40	30.48	26.35	24.13	27.35	28.55	29.12	28.15
50	36.83	32.70	30.48	33.70	34.90	35.47	34.50
68	48.26	44.13	41.91	45.13	46.33	46.90	45.93
80	55.88	51.75	49.53	52.75	53.95	54.52	53.55

						OPERATION		DRAW		WLY		2019.10.30		SOLEPIN 东莞市硕品电子有限公司 Professional connector manufacturer DONGGUAN SOLEPIN ELECTRONICS CO., LTD.				
						X.X	±0.40	DESIGN		Jensen		2019.10.30						
						X.XX	±0.25	CHECK		Jack		2019.10.30		SIZE	A4	PART NO.	66F2-MXXXXXXXXR01	
A0		NEW			——	——	X.XXX	±0.15	APPROVE		Andy		2019.10.30		SHEET	1/2	TITLE:	PITCH 1.27 MALE BOARD TO BOARD CONNECTOR
						Angle	±3°											
REV	DATE	MODIFICATION DESCRIPTION			CHANGE	APPROVE	DIM.	TOL	UNIT	mm	SCALE	1:1	PROJ.		DRAW NO.	SP-070		

客户图

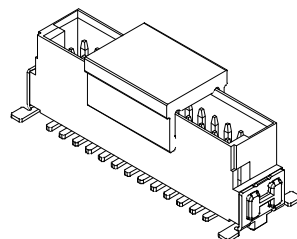
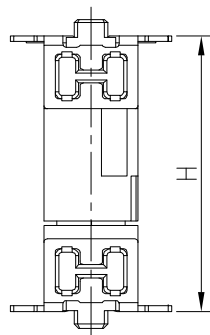


66F2-M

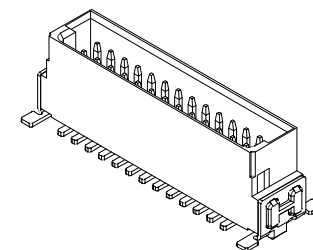


66F2-F

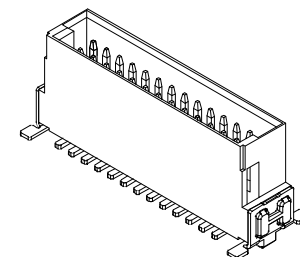
Mating →



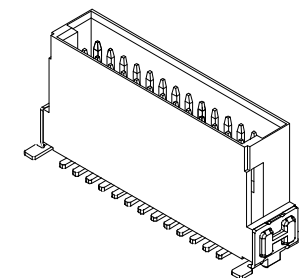
Standing Height:1
With Cap Type



STANDING HEIGHT: 1 (6.75)




STANDING HEIGHT: 2 (8.25)



STANDING HEIGHT: 3 (9.85)

Code	1			2			3		
X(66F2-M)	6.75			8.25			9.85		
Y(66F2-F)	6.25	9.05	13.65	6.25	9.05	13.65	6.25	9.05	13.65
H(Mating)	8.0	10.8	15.4	9.5	12.3	16.9	11.1	13.9	18.5

					OPERATION		DRAW		WLY		2019.10.30		SOLEPIN 东莞市硕品电子有限公司 Professional connector manufacturer DONGGUAN SOLEPIN ELECTRONICS CO., LTD.			
					X.X	±0.40	DESIGN		Jensen		2019.10.30					
					X.XX	±0.25	CHECK		Jack		2019.10.30		SIZE	A4	PART NO.	66F2-MXXXXXXXXR01
A0		NEW			X.XXX	±0.15	APPROVE		Andy		2019.10.30		SHEET	2/2	TITLE:	PITCH 1.27 MALE BOARD TO BOARD CONNECTOR
REV	DATE	MODIFICATION DESCRIPTION		CHANGE	APPROVE	DIM.	TOL	UNIT	mm	SCALE	1:1	PROJ.		DRAW NO.	SP-070	
						Angle	±3°									

客户图

NOTES:

1.FINISH:

- 1.1 HOUSING: LCP BLACK,UL94V-0.
- 1.2 CONTACT: PHOSPHOR BRONZE, INTEGRAL NICKEL BASE 50u"MIN, GOLD (SEE P/N) PLATED IN CONTACT AREA, 100u" MIN MATTE TIN PLATED IN SOLDER AREA.
- 1.3 LOCK: BRASS, 100u" MIN TIN PLATED OVER NICKEL 40u".

2. ELECTRICAL:

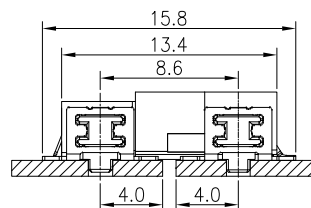
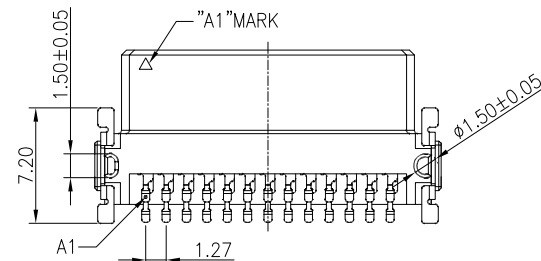
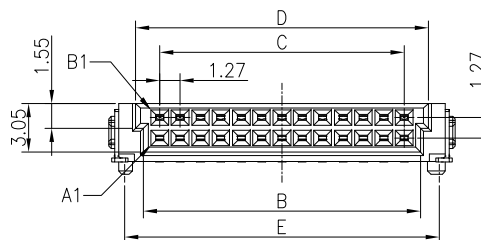
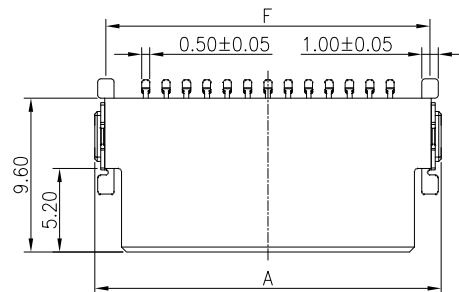
- 2.1 CURRENT RATING: 1.7AMP.
- 2.2 DIELECTRIC WITHSTANDING VOLTAGE: 500V AC
- 2.3 INSULATION RESISTANCE: 1000MΩ MIN.
- 2.4 CONTACT RESISTANCE: 25mΩ MAX.

3. OPERATION TEMPERATURE:-55°C TO +125°C.

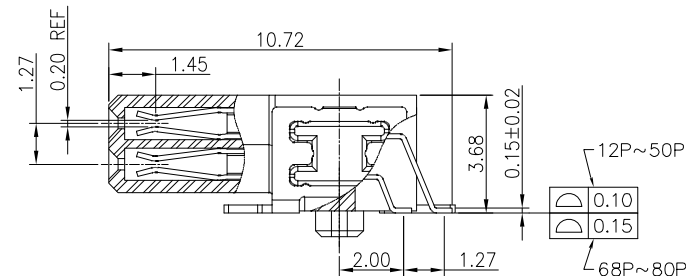
4. RoHS COMPLIANT.

66F2R-F XXX XX 030 R 01

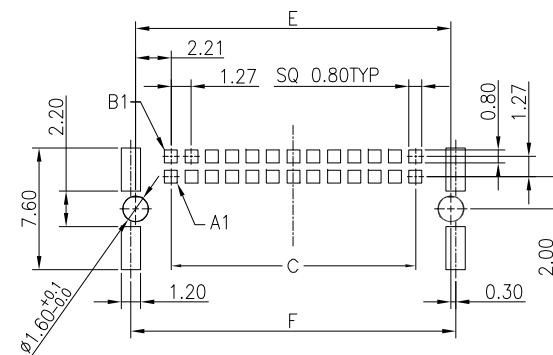
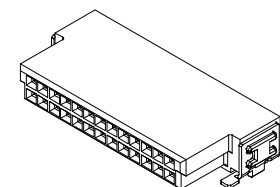
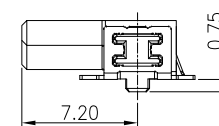
Pin数码 端子电镀: 塑胶高度: 包装方式:
010=2*05PIN S1=1u" Gold/Tin 030=3.05mm R=载带包装
~ S3=5u" Gold/Tin
080=2*40PIN S6=30u" Gold/Tin



SMC Connector Board To Board
Mating Length



CROSS SECTION
SCALE 2:1



P.C.B. Layout
Tolerance: ±0.05

Dimension

Positions	A	B	C	D	E	F
10	11.43	7.10	5.08	8.10	9.50	10.07
12	12.70	8.37	6.35	9.37	10.77	11.34
16	15.24	10.91	8.89	11.91	13.31	13.88
20	17.78	13.45	11.43	14.45	15.85	16.42
24	20.32	15.99	13.97	16.99	18.39	18.96
26	21.59	17.26	15.24	18.26	19.66	20.23
30	24.13	19.80	17.78	20.80	22.20	22.77
32	25.40	21.07	19.05	22.07	23.47	24.04
40	30.48	26.15	24.13	27.15	28.55	29.12
50	36.83	32.50	30.48	33.50	34.90	35.47
68	48.26	43.93	41.91	44.93	46.33	46.90
80	55.88	51.55	49.53	52.55	53.95	54.52

OPERATION	DRAW	WLY	2019.10.30
X.X ±0.40	DESIGN	Jensen	2019.10.30
X.XX ±0.25	CHECK	Jack	2019.10.30
X.XXX ±0.15	APPROVE	Andy	2019.10.30
Angle ±3°	UNIT	mm	SCALE 1:1
DIM. TOL			

SOLEPIN 东莞市硕品电子有限公司
Professional connector manufacturer DONGGUAN SOLEPIN ELECTRONICS CO., LTD.

REV	DATE	MODIFICATION DESCRIPTION	CHANGE	APPROVE	SIZE	A4	PART NO.	66F2R-FXXXXX030R01
AO		NEW			SHEET	1/2	TITLE:	PITCH 1.27 FEMALE BOARD TO BOARD CONNECTOR
					PROJ.		DRAW NO.	SP-070

客户图

NOTES:

1.FINISH:

- 1.1 HOUSING: LCP BLACK,UL94V-0.
- 1.2 CONTACT: PHOSPHOR BRONZE, INTEGRAL NICKEL BASE 50u"MIN, GOLD (SEE P/N) PLATED IN CONTACT AREA, 100u" MIN MATTE TIN PLATED IN SOLDER AREA.
- 1.3 LOCK: BRASS, 100u" MIN TIN PLATED OVER NICKEL 40u".

2. ELECTRICAL:

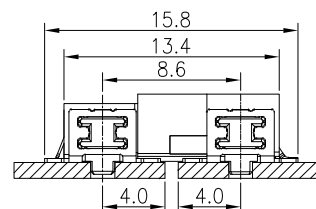
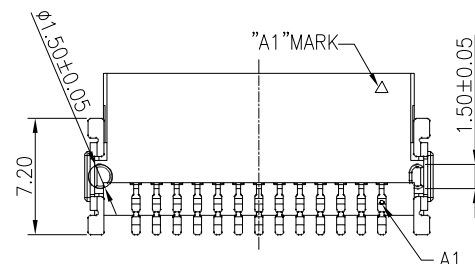
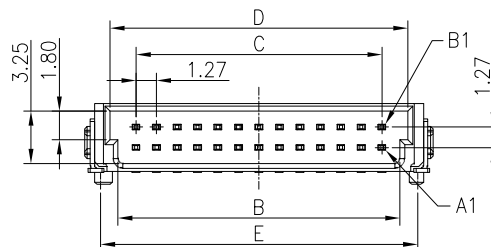
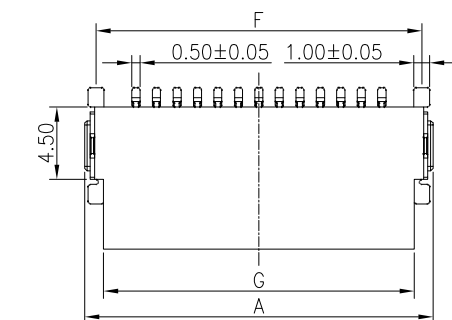
- 2.1 CURRENT RATING: 1.7AMP.
- 2.2 DIELECTRIC WITHSTANDING VOLTAGE: 500V AC
- 2.3 INSULATION RESISTANCE: 1000MΩ MIN.
- 2.4 CONTACT RESISTANCE: 25mΩ MAX.

3. OPERATION TEMPERATURE:-55°C TO +125°C.

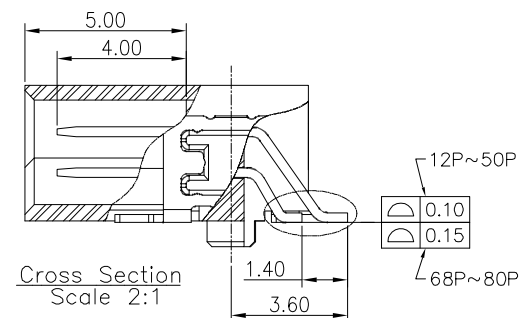
4. RoHS COMPLIANT.

66F2R-M XXX XX 042 R 01

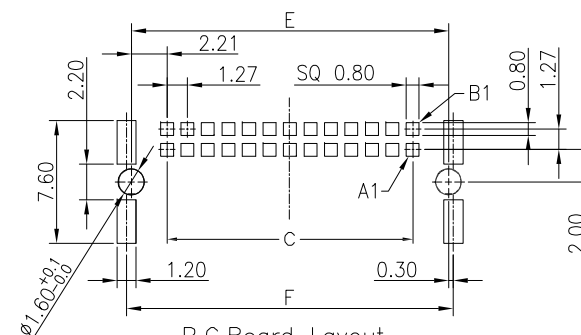
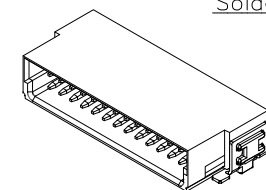
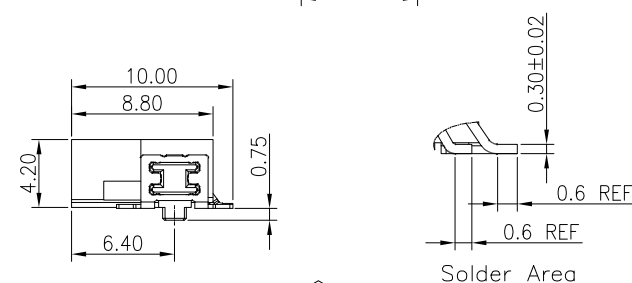
Pin数码 端子电镀: 塑胶高度: 包装方式:
010=2*05PIN S1=1u" Gold/Tin 042=4.20mm R=载带包装
~ S3=5u" Gold/Tin
080=2*40PIN S6=30u" Gold/Tin



SMC Connector Board To Board Mating Length



Cross Section Scale 2:1

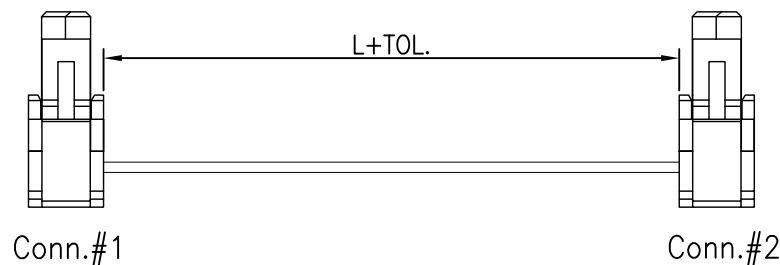
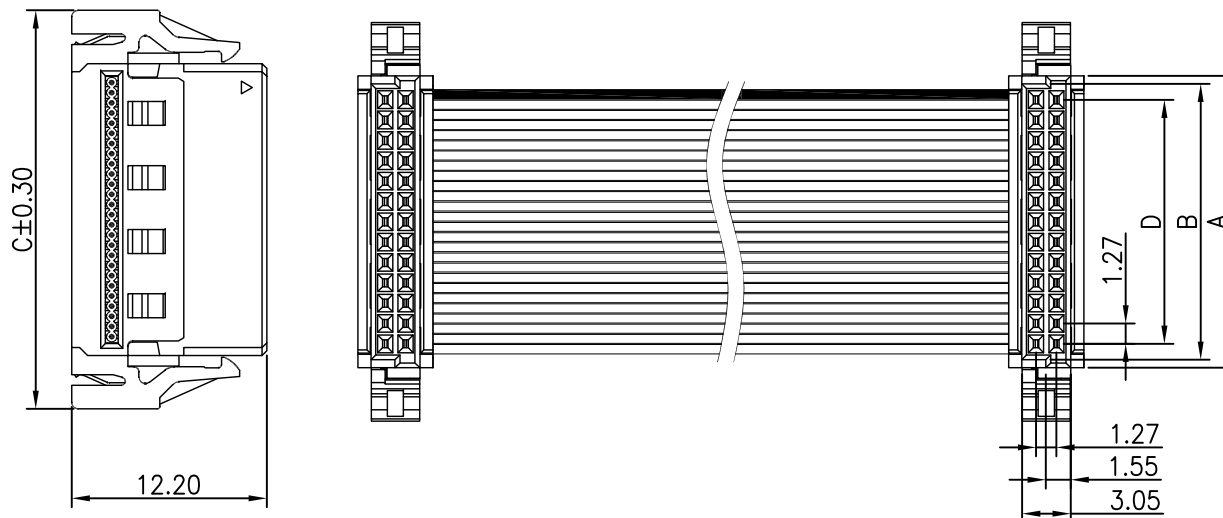


P.C.Board Layout Tolerance: ±0.05

Dimension							
Positions	A	B	C	D	E	F	G
10	11.43	7.30	5.08	8.30	9.50	10.07	9.10
12	12.70	8.57	6.35	9.57	10.77	11.34	10.37
16	15.24	11.11	8.89	12.11	13.31	13.88	12.91
20	17.78	13.65	11.43	14.65	15.85	16.42	15.45
24	20.32	16.19	13.97	17.19	18.39	18.96	17.99
26	21.59	17.46	15.24	18.46	19.66	20.23	19.26
30	24.13	20.00	17.78	21.00	22.20	22.77	21.80
32	25.40	21.27	19.05	22.27	23.47	24.04	23.07
40	30.48	26.35	24.13	27.35	28.55	29.12	28.15
50	36.83	32.70	30.48	33.70	34.90	35.47	34.50
68	48.26	44.13	41.91	45.13	46.33	46.90	45.93
80	55.88	51.75	49.53	52.75	53.95	54.52	53.55

						OPERATION	DRAW	WLY	2019.10.30	SOLEPIN 东莞市硕品电子有限公司 Professional connector manufacturer DONGGUAN SOLEPIN ELECTRONICS CO., LTD.			
						X.X ±0.40	DESIGN	Jensen	2019.10.30				
						X.XX ±0.25	CHECK	Jack	2019.10.30				
						X.XXX ±0.15	APPROVE	Andy	2019.10.30				
AO						Angle ±3°				SIZE	A4	PART NO.	66F2R-MXXXXX042R01
REV	DATE					DIM. TOL	UNIT	mm	SCALE	1:1	SHEET	1/2	TITLE: PITCH 1.27 MALE BOARD TO BOARD CONNECTOR
											PROJ.	DRAW NO.	SP-071

客户图



66F4W-F XXX XX 122 E 01-2 LCM HX-PVC

PVC: PVC CABLE

NO. OF POSITIONS
012=2*06PIN
~
080=2*40PIN

PLATED:
S0=Gold Flash
S4=10u" Gold
S5=15u" Gold
S6=30u" Gold


PLASTIC HEIGHT:
120=12.20mm

LCM=CABLE LENGTH

CODE OPTION

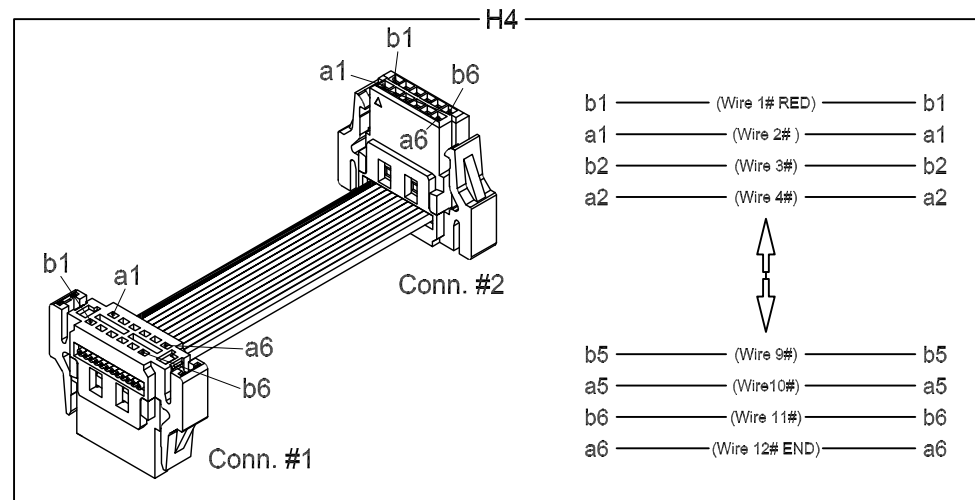
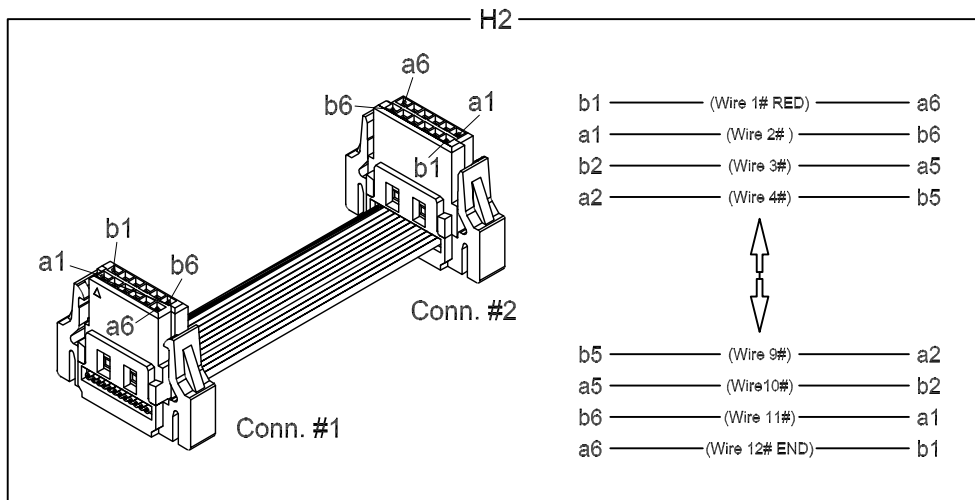
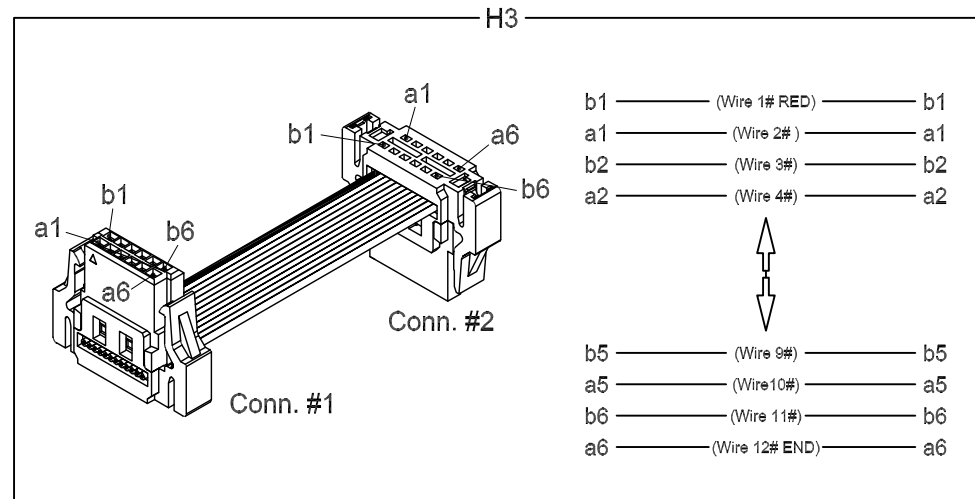
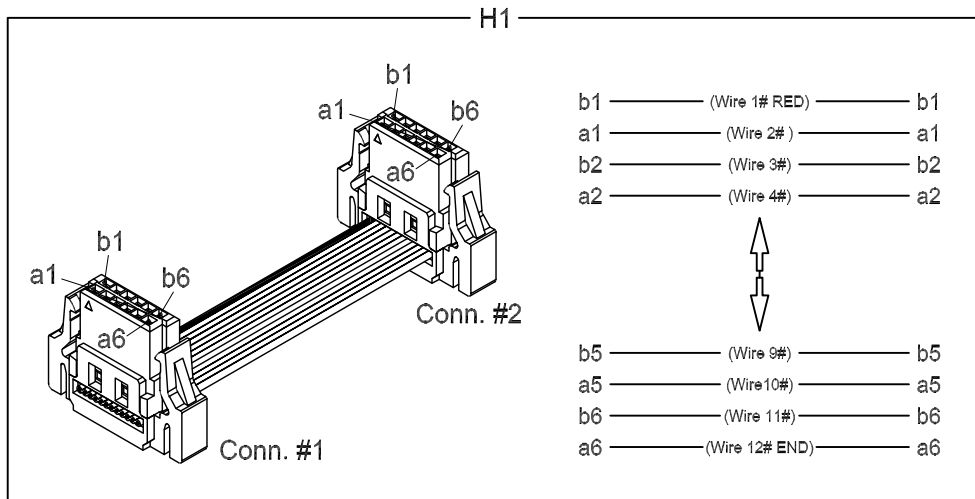
L(LENGTH)	TOL(TOLERANCES)	40	50	68	80
<=100CM	0/+5mm	27.13	33.48	44.91	52.53
<=300CM	0/+10mm	26.13	32.48	43.91	51.53
>300CM	0/+20mm	33.98	33.98	51.38	59.38


Positions	Dimension			
	A	B	C	D
12	9.35	8.35	16.20	6.35
16	11.89	10.89	18.74	8.89
20	14.43	13.43	21.28	11.43
26	18.24	17.24	25.09	15.24
30	20.78	19.78	27.63	17.78
32	22.05	21.05	28.90	19.05
40	27.13	26.13	33.98	24.13
50	33.48	32.48	33.98	30.48
68	44.91	43.91	51.38	41.91
80	52.53	51.53	59.38	49.53

					OPERATION		DRAW		WLY		2022.03.10		<div>SOLEPIN 东莞市硕品电子有限公司</div> <div>Professional connector manufacturer DONGGUAN SOLEPIN ELECTRONICS CO., LTD.</div>			
					X.X	.	DESIGN		Jensen		2022.03.10					
					X.XX	.	CHECK		Jack		2022.03.10		SIZE	A4	PART NO.	66F4W-FXXXXX122E01-2LCMHX-PVC
A0		NEW			X.XXX	.	APPROVE		Andy		2022.03.10		SHEET	1/2	TITLE:	1.27 Pitch IDC Female coble Assembly ① 777
REV	DATE	MODIFICATION DESCRIPTION	CHANGE	APPROVE	DIM.	TOL	UNIT		mm	SCALE	1:1	PROJ.		DRAW NO.	SP-134	

客户图

CODE OPTION



					OPERATION		DRAW		WLY		2022.03.10		<div>SOLEPiN 东莞市硕品电子有限公司</div> <div>Professional connector manufacturer DONGGUAN SOLEPIN ELECTRONICS CO., LTD.</div>			
					X.X	±0.40	DESIGN		Jensen		2022.03.10					
					X.XX	±0.25	CHECK		Jack		2022.03.10		SIZE	A4	PART NO.	66F4W-FXXXXX122E01-2LCMHX-PVC
AO		NEW			X.XXX	±0.15	APPROVE		Andy		2022.03.10		SHEET	2/2	TITLE:	1.27 Pitch IDC Female coble Assembly ① 777
REV	DATE	MODIFICATION DESCRIPTION	CHANGE	APPROVE	DIM.	TOL	UNIT	mm	SCALE	1:1	PROJ.		DRAW NO.	SP-134		