

客户图

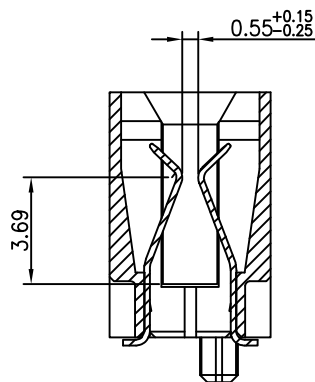
NOTES:

1. FINISH:
 - 1.1 HOUSING: LCP BLACK,UL94V-0.
 - 1.2 CONTACT: PHOSPHOR COPPER.
30u" GOLD (SEE P/N) PLATED,
80u" MIN. NICKEL UNDERPLATED OVER ALL.
2. ELECTRICAL:
 - 2.1 CURRENT RATING: 3.5 A.
 - 2.2 VOLTAGE RATING: 50 V AC.
 - 2.3 CONTACT RESISTANCE: 15mΩ MAX.
 - 2.4 INSULATION RESISTANCE: 10000MΩ MIN.
 - 2.5 WITHSTANDING VOLTAGE: 840V AC/1MINUTE.
 - 2.6 OPERATION TEMPERATURE:-55°C TO +125°C.

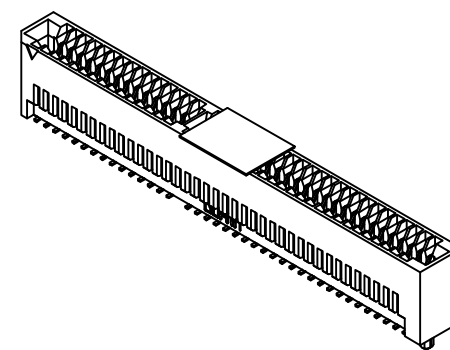
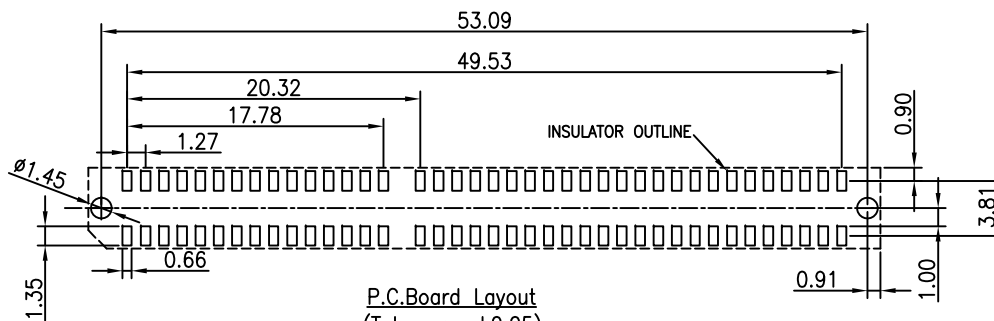
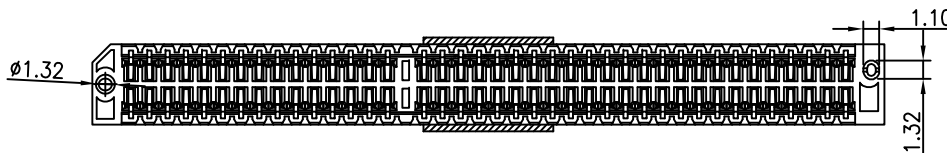
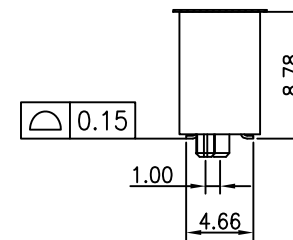
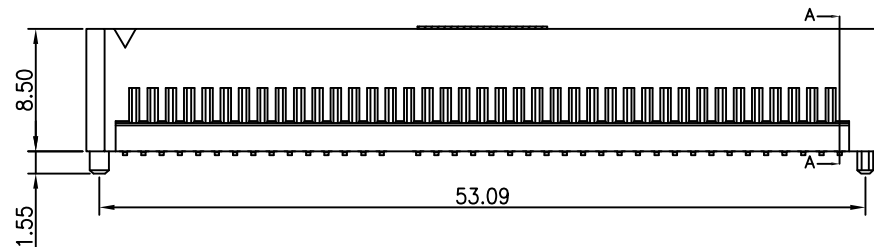
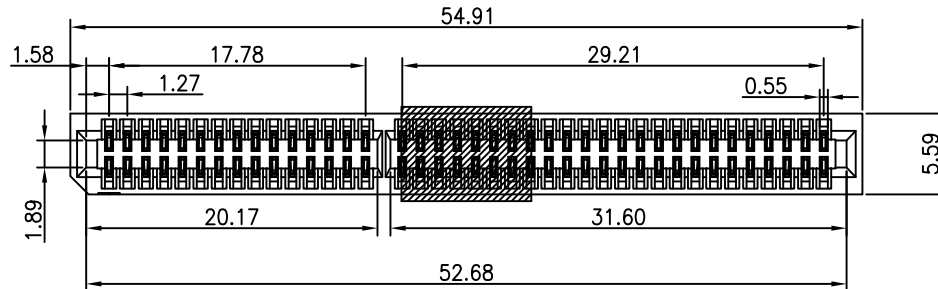
3.ORDER INFORMATION:

61H1-F XXX XX 085 R 01

Pin数码	端子电镀:	塑胶高度:	包装方式:
010=2*05PIN	G0=Gold Flash	085=8.50mm	R=REEL
~	G1=1u" Gold		
200=2*100PIN	G2=3u" Gold		
	G3=5u" Gold		
	G4=10u" Gold		
	G5=20u" Gold		
	G6=30u" Gold		



Section A-A
Scale 2:1

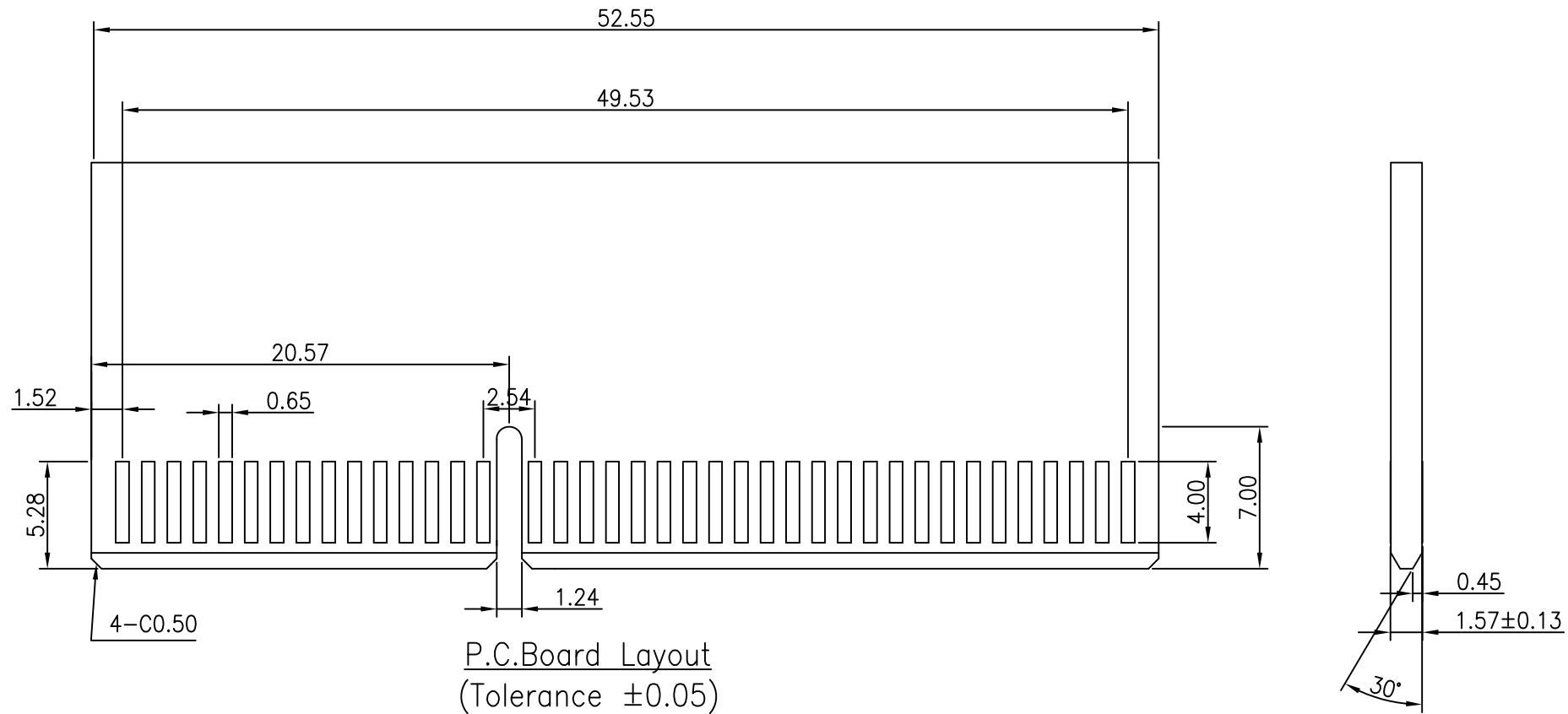


OPERATION		DRAW	WLY	2021.11.18
X.X	±0.40	DESIGN	Jensen	2021.11.18
X.XX	±0.25	CHECK	Jack	2021.11.18
X.XXX	±0.15	APPROVE	Andy	2021.11.18
Angle	±3°	UNIT	mm	SCALE
DIM.	TOL	UNIT	mm	SCALE
		UNIT	mm	SCALE

SOLEPIN 东莞市硕品电子有限公司
Professional connector manufacturer DONGGUAN SOLEPIN ELECTRONICS CO., LTD.

REV	DATE	MODIFICATION DESCRIPTION	CHANGE	APPROVE	SIZE	A4	PART NO.	61F1-FXXXXX085R01
AO		NEW			SHEET	1/1	TITLE:	1.27mm Pitch 金手指插槽
					PROJ.	SP-786	DRAW NO.	

客户图



REV	DATE	MODIFICATION DESCRIPTION	CHANGE	APPROVE	DIM.	TOL	UNIT	mm	SCALE	1:1	PROJ.	DRAW NO.	SP-786			
AO		NEW			Angle	±3°										
					X.X	±0.40	OPERATION	DRAW	WLY	2021.11.18	SOLEPIN 东莞市硕品电子有限公司 Professional connector manufacturer DONGGUAN SOLEPIN ELECTRONICS CO., LTD.					
					X.XX	±0.25	DESIGN	Jensen	2021.11.18	SIZE				A4	PART NO.	61F1-FXXXXX085R01
					X.XXX	±0.15	CHECK	Jack	2021.11.18	SHEET				1/1	TITLE:	1.27mm Pitch 金手指插槽
							APPROVE	Andy	2021.11.18							