

客户图

NOTES:

1. FINISH:

- 1.1 HOUSING: LCP BLACK,UL94V-0.
- 1.2 CONTACT: BRASS,SEE P/N PLATED,
- 1.3 GROUND: BRASS,80u" MIN. MATTE TIN PLATED OVER 50u" MIN. NICKEL UNDERPLATED OVERALL.

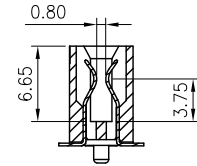
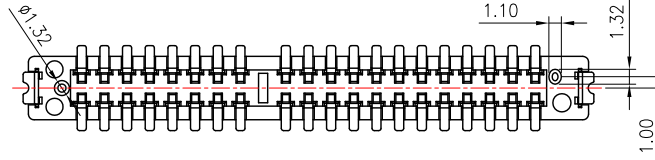
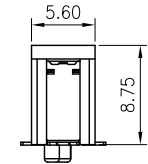
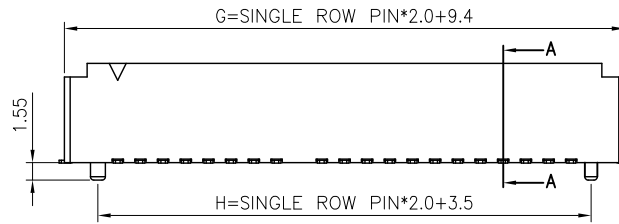
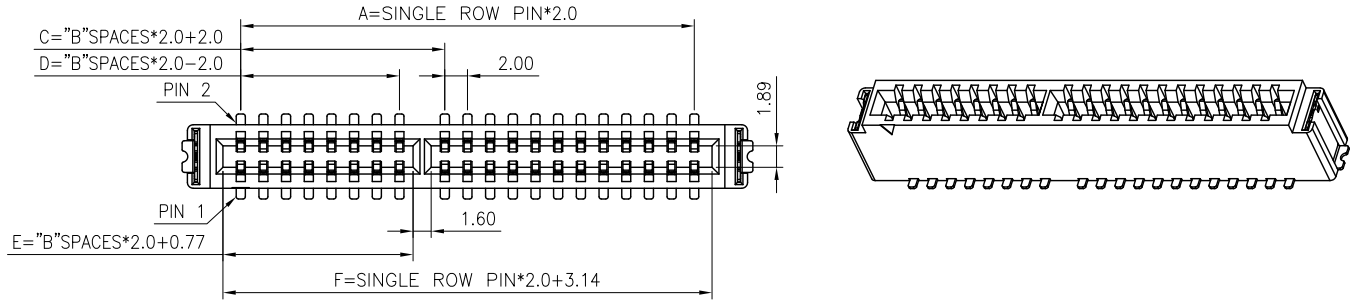
2.ORDER INFORMATION:

61G1-F XXX XX 087 C 01- XX

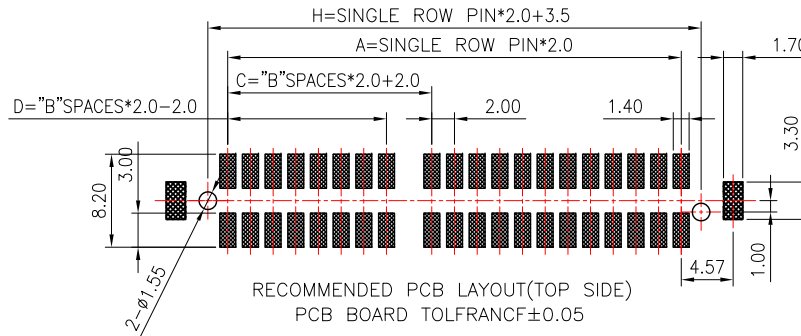
Pin 数码 SEE TABLE	端子电镀: G0=Gold Flash(全金) G1=1u" Gold G2=3u" Gold G3=5u" Gold G4=10u" Gold G5=15u" Gold G6=30u" Gold	塑胶高度: 087=8.75mm	包装方式: C=脆盘包装	"B"SPACES PIN数: 01=2x1PIN 50=2x50PIN
---------------------	---	---------------------	-----------------	---

TABLE1:

No. OF PIN	A	"B" (PIN数)	C	D	E	F	G	H
010:2x5PIN	10.00	1	4.00	NA	2.77	13.14	19.40	13.50
016:2x8PIN	16.00	2	6.00	2.00	4.77	19.14	25.40	19.50
040:2x20PIN	40.00	7	16.00	12.00	14.77	43.14	49.40	43.50
040:2x20PIN	40.00	8	18.00	14.00	16.77	43.14	49.40	43.50
042:2x21PIN	42.00	8	18.00	14.00	16.77	45.14	51.40	45.50
060:2x30PIN	60.00	10	22.00	18.00	20.77	63.14	69.40	63.50
080:2x40PIN	80.00	15	32.00	28.00	30.77	83.14	89.40	83.50
100:2x50PIN	100.00	20	42.00	38.00	40.77	103.14	109.40	103.50



SECTION: A-A



					OPERATION	DRAW	WLY	2021.02.03	SOLEPIN 东莞市硕品电子有限公司 Professional connector manufacturer DONGGUAN SOLEPIN ELECTRONICS CO., LTD.			
					X.X ±0.40	DESIGN	Jensen	2021.02.03				
					X.XX ±0.25	CHECK	Jack	2021.02.03	SIZE	A4	PART NO.	61G1-FXXXXX087C01-XX
					X.XXX ±0.15	APPROVE	Andy	2021.02.03	SHEET	1/1	TITLE:	2.0mm 金手指 SMT 180° TYPE
AO			NEW		Angle ±3°	UNIT	mm	SCALE	1:1	PROJ.	DRAW NO.	SP-359
REV	DATE	MODIFICATION DESCRIPTION		CHANGE	APPROVE							

客户图

NOTES:

1. FINISH:
 - 1.1 HOUSING: LCP BLACK,UL94V-0.
 - 1.2 CONTACT: BRASS,SEE P/N PLATED,
 - 1.3 GROUND: BRASS,80u" MIN. MATTE TIN PLATED OVER 50u" MIN. NICKEL UNDERPLATED OVERALL.

2.ORDER INFORMATION:

- 2.1 CURRENT RATING:3A;
- 2.2 DIELECTRIC WITHSTANDING VOLTAGE: 500V AC/MINUTE.
- 2.3 CONTACT RESISTANCE: 50mΩ MAX.
- 2.4 INSULATION RESISTANCE: 1000MΩ MIN.
- 2.5 OPERATION TEMPERATURE:-40°C TO +105°C.

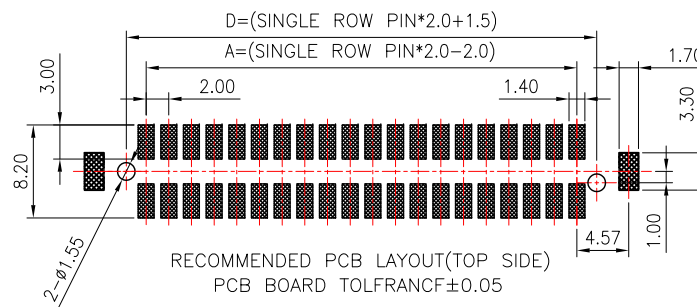
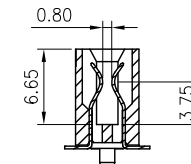
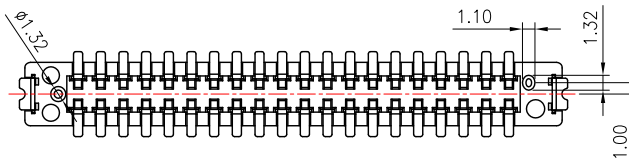
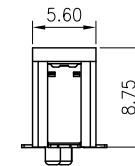
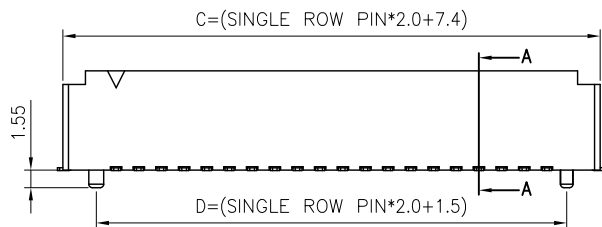
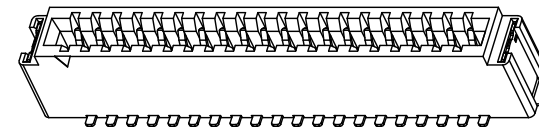
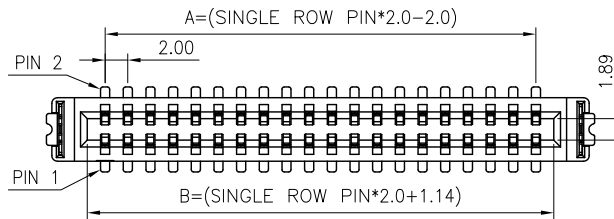
3. ELECTRICAL:

61G1-F XXX XX 087 C 02

Pin数码 SEE TABLE 端子电镀: G0=Gold Flash(全金) G1=1u" Gold G2=3u" Gold G3=5u" Gold G4=10u" Gold G5=15u" Gold G6=30u" Gold 塑胶高度: 087=8.75mm 包装方式: C=脆盘包装

TABLE1:

No. OF PIN	A	B	C	D
010:2x4PIN	6.00	9.14	15.40	9.50
010:2x5PIN	8.00	11.14	17.40	11.50
016:2x8PIN	14.00	17.14	23.40	17.50
020:2x10PIN	18.00	21.14	27.40	21.50
030:2x15PIN	28.00	31.14	37.40	31.50
040:2x20PIN	38.00	41.14	47.40	41.50
050:2x25PIN	48.00	51.14	57.40	51.50
060:2x30PIN	58.00	61.14	67.40	61.50
080:2x40PIN	78.00	81.14	87.40	81.50
100:2x50PIN	98.00	101.14	107.40	101.50



OPERATION		DRAW	WLY	2021.02.03
X.X	±0.40	DESIGN	Jensen	2021.02.03
X.XX	±0.25	CHECK	Jack	2021.02.03
X.XXX	±0.15	APPROVE	Andy	2021.02.03
Angle	±3°	UNIT	mm	SCALE
DIM.	TOL	UNIT	mm	SCALE
				1:1

SOLEPIN 东莞市硕品电子有限公司
Professional connector manufacturer DONGGUAN SOLEPIN ELECTRONICS CO., LTD.

REV	DATE	MODIFICATION DESCRIPTION	CHANGE	APPROVE
AO		NEW		

SIZE	A4	PART NO.	61G1-FXXXXX087C02
SHEET	1/1	TITLE:	2.0mm 金手指 SMT 180° TYPE 无隔栏
PROJ.	SP-359	DRAW NO.	